

Pająk 1400 \downarrow × 531 \leftrightarrow SX
colour: Raw Copper | Product made of copper

Angled thermostatic regulating valve set Brass Wood
Wooden hangers

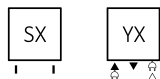


TERMA
SINCE 1990

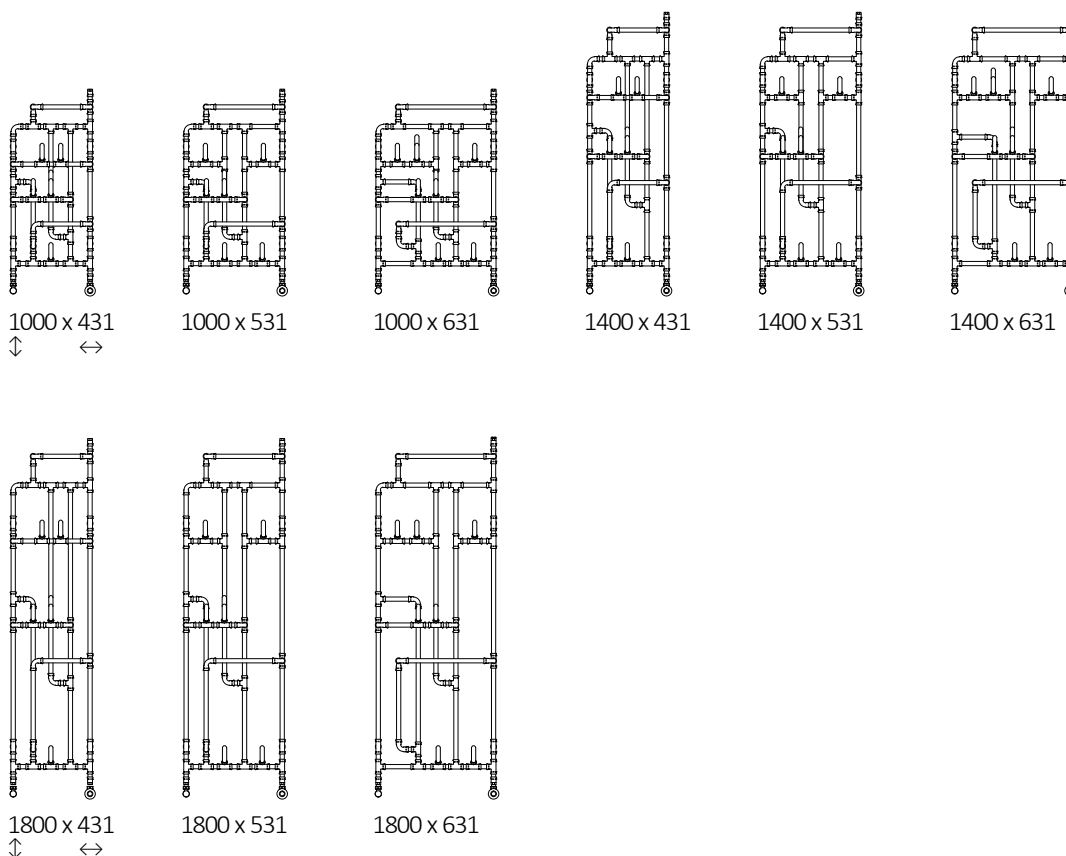




Standard connection:



Available sizes:



Specification:

Working pressure: 1000 kPa

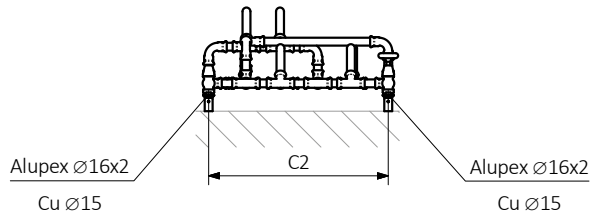
Maximum operating temperature: 95°C

A ↑ [mm]	B ↔ [mm]	C1 [mm]	C2 [mm]	75/65/20°C [W]	55/45/20°C [W]	 [W]	D [mm]	E [mm]	F [mm]	 [dm³]	 [kg]	Product code <small>(konfiguracja s. 6)</small>
1000	431	196	400	300	165	300	400	505	196,5	2,13	9,19	WGPAJ100043
1000	531	200	500	339	184	400	500	505	196,5	2,20	9,57	WGPAJ100053
1000	631	312	600	380	205	400	600	505	196,5	2,46	10,31	WGPAJ100063
1400	431	196	400	368	199	400	400	852	196,5	2,70	10,28	WGPAJ140043
1400	531	200	500	424	227	400	500	852	196,5	2,77	10,68	WGPAJ140053
1400	631	312	600	480	256	600	600	852	196,5	3,02	11,40	WGPAJ140063
1800	431	196	400	437	234	400	400	1162	196,5	3,26	11,39	WGPAJ180043
1800	531	200	500	510	272	600	500	1162	196,5	3,32	11,79	WGPAJ180053
1800	631	312	600	582	310	600	600	1162	196,5	3,58	12,53	WGPAJ180063

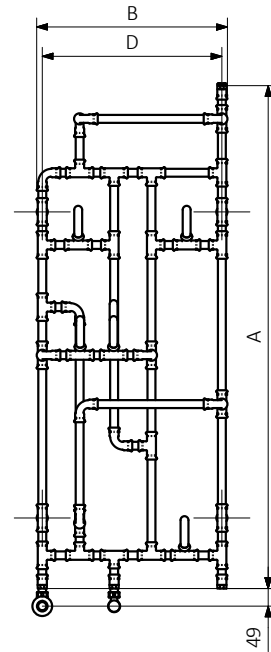
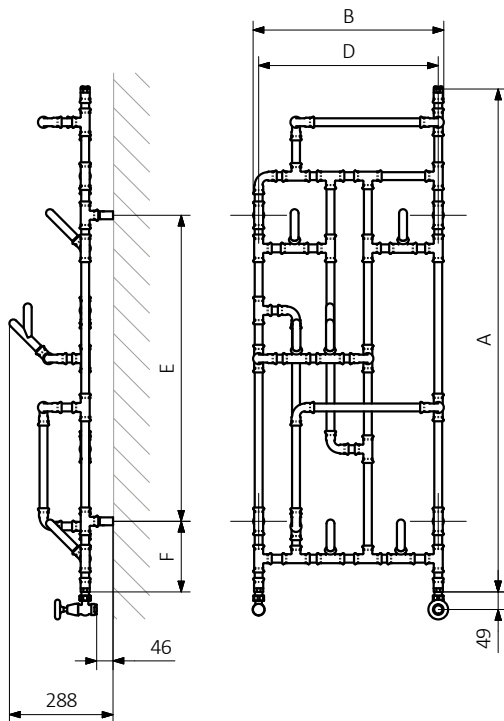
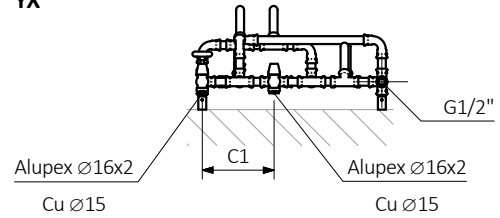


Technical drawing:

SX

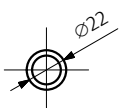


YX



A – Height B – Width C1-C5 – Distance between pipe centres D – Horizontal distance between mounting bracket centres
E – Vertical distance between mounting brackets F – Distance between a mounting bracket and the bottom of the radiator

Pipe :





In the table with technical data, the last column lists product codes. When placing an order, please remember to quote the product code followed by the configuration code as shown in the diagram below:

The construction of a water and dual fuel radiator product and configuration code:

WGPAJ100043

PRODUCT CODE
(located in the table for the product)

KMIESX

CONFIGURATION CODE
(supplemented by hand)

Example Configuration

K MIE **SX**

Package code
K - carton box

Connection code



Legend



Radiator available in a "water" version.



Radiator suitable for dual fuel connection. Electric heating element can be installed.



Radiator available in electric only version. It comes prefilled with a 'heating medium' and equipped with a heating element. All tested and ready to use.



Connection types dedicated for this radiator. The icon shows the flow and return connections for the radiator as well as the thermostatic valve and heating element position if applicable.



Suggested heating element power output for electric and dual fuel versions.



Weight.



Capacity.



Available in chrome finish.



No additional payment for a color.