

*FACE ZERO, il primo radiatore raso muro di Irsap. Un prodotto dallo spiccato valore estetico che garantisce complanarità con le pareti, integrandosi e fondendosi in ambienti di grande valenza architettonica. La gestione del comfort è garantita dall'integrazione dell'unità modulante NOW, presente di serie in tutte le versioni. Grazie all'ampia superficie radiante e alla forma della cornice che permette la perfetta diffusione dell'aria calda, i radiatori Face Zero sono ideali per il funzionamento di impianti a bassa temperatura. L'apertura a libro con chiusura a calamita, sicura e facile, garantisce una veloce e corretta pulizia e un pratico accesso a tutte le parti funzionali del corpo scaldante. Il radiatore può essere integrato direttamente ai "Sistemi Now" ed al controllo remoto tramite smartphone. Face Zero è disponibile nelle nuance di colore Irsap (Classic e Special) e nelle raffinate finiture esclusive in acciaio inox proposte dallo Studio Citterio.*



Face Zero, Hight 1800 mm, Lenght 600 mm, Black Dots,

## Construction features

- radiating panel
- 1/2" Gas right threading
- maximum working pressure 4 bar
- maximum working temperature 95°C
- radial fans with low fuel motors

## Standard equipment

- 2 lockshield valves 1/2" M 1/2" F – FE connection
- flexible pipes for ease of installation
- wall fastening system
- 2 batteries
- modulating thermostatic head

## Plus



## Technical data

Model	Depth (mm)	Height (mm)	Width (mm)	Conn. C. (mm)	Weight (kg)	Capacity (lt)	$\Delta t=50^{\circ}\text{C}$ (Btu/h)	$\Delta t=50^{\circ}\text{C}$ (kcal/h)	$\Delta t=50^{\circ}\text{C}$ (Watt)	$\Delta t=40^{\circ}\text{C}$ (Watt)	$\Delta t=30^{\circ}\text{C}$ (Watt)	$\Delta t=20^{\circ}\text{C}$ (Watt)	Exponent
FACE ZERO 1600 x 500	75,0	1597	500	50	30,40	1,20	1.842,0	464,0	540,0	409,0	287,0	173,0	1,240
FACE ZERO 1600 x 600	75,0	1597	598	50	36,10	1,60	2.457,0	619,0	720,0	547,0	384,0	233,0	1,240
FACE ZERO 1800 x 500	75,0	1797	500	50	34,40	1,40	2.354,0	593,0	690,0	523,0	366,0	222,0	1,230
FACE ZERO 1800 x 600	75,0	1797	598	50	40,90	1,80	3.071,0	774,0	900,0	684,0	480,0	292,0	1,230

(\*) Thanks to the high performance of Irsap Face Zero radiators, the ideal  $\Delta t$  for low temperature projects is  $\Delta t$  at  $30^{\circ}\text{C}$ .

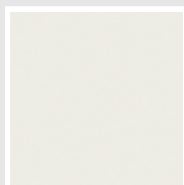
For  $\Delta t$  different from  $50^{\circ}\text{C}$  use the formula:  $Q=Q_n (\Delta t / 50)^n$

### Standard equipment

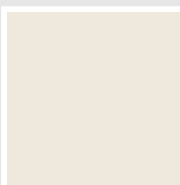
- 2 lockshield valves 1/2" M 1/2" F – FE connection
- flexible pipes for ease of installation
- wall fastening system
- 2 batteries
- modulating thermostatic head

## Colors and Finishes

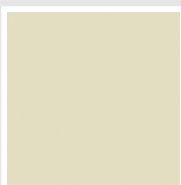
### CLASSIC



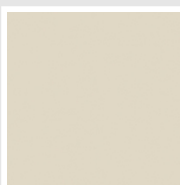
Bianco Edelweiss  
Opaco  
Cod. 34



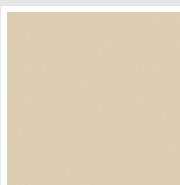
Bianco Whisper  
Peach  
Cod. 36



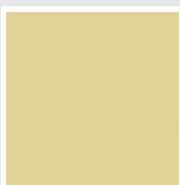
Avorio - RAL 1013  
Cod. 02



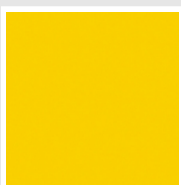
Jasmin Opaco  
Cod. 35



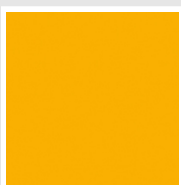
Beige Naturale  
Cod. 38



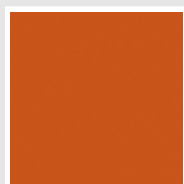
Beige Cream  
Cod. 26



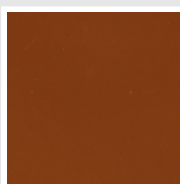
Giallo - RAL 1021  
Cod. 04



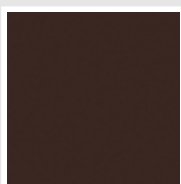
Giallo Melone - RAL  
1028  
Cod. E7



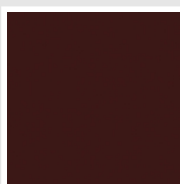
Arancio - RAL 2004  
Cod. 17



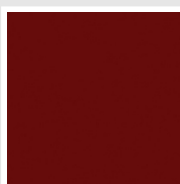
Marrone Ruggine -  
RAL 8004  
Cod. E1



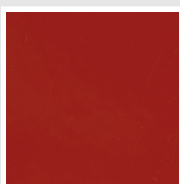
Marrone - RAL 8017  
Cod. 09



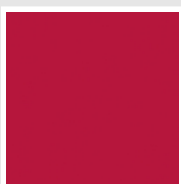
Vinaccia - RAL 3005  
Cod. H9



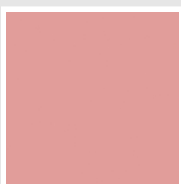
Amaranto - RAL 3003  
Cod. 06



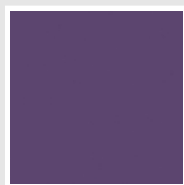
Rosso - RAL 3000  
Cod. 05



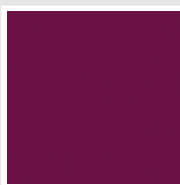
Rosso Fragola - RAL  
3018  
Cod. Y3



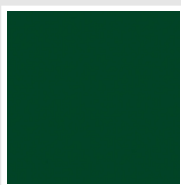
Rosa - RAL 3015  
Cod. R2



Lilla Bluastro - RAL  
4005  
Cod. R3



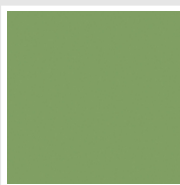
Porpora Traffico -  
RAL 4006  
Cod. R6



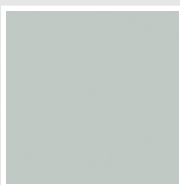
Verde Bosco - RAL  
6005  
Cod. 19



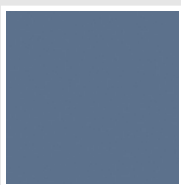
Verde Erba - RAL  
6018  
Cod. N3



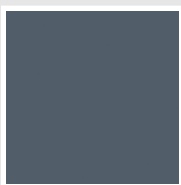
Verde Salvia - RAL  
6021  
Cod. E6



Verde Greenwich  
Cod. 28



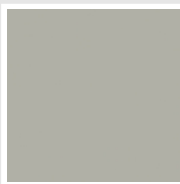
Blu Pastello - RAL  
5024  
Cod. G7



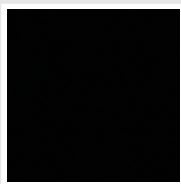
Blu Colomba - RAL  
5014  
Cod. G9



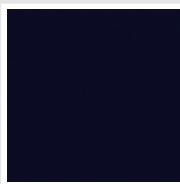
Blu Hewi  
Cod. 11



Grigio Manhattan  
Cod. 03

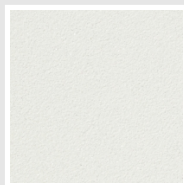


Nero - RAL 9005  
Cod. 10



Deep Blue  
Cod. 2F

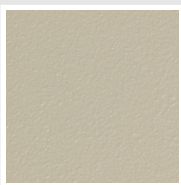
### SPECIAL



Bianco Perla  
Cod. 16



Quartz 1  
Cod. 1C



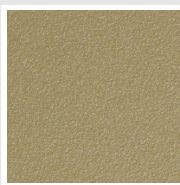
Sablé  
Cod. Y4



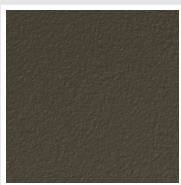
Quartz 2  
Cod. 2C



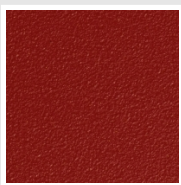
Sunstone  
Cod. 2D



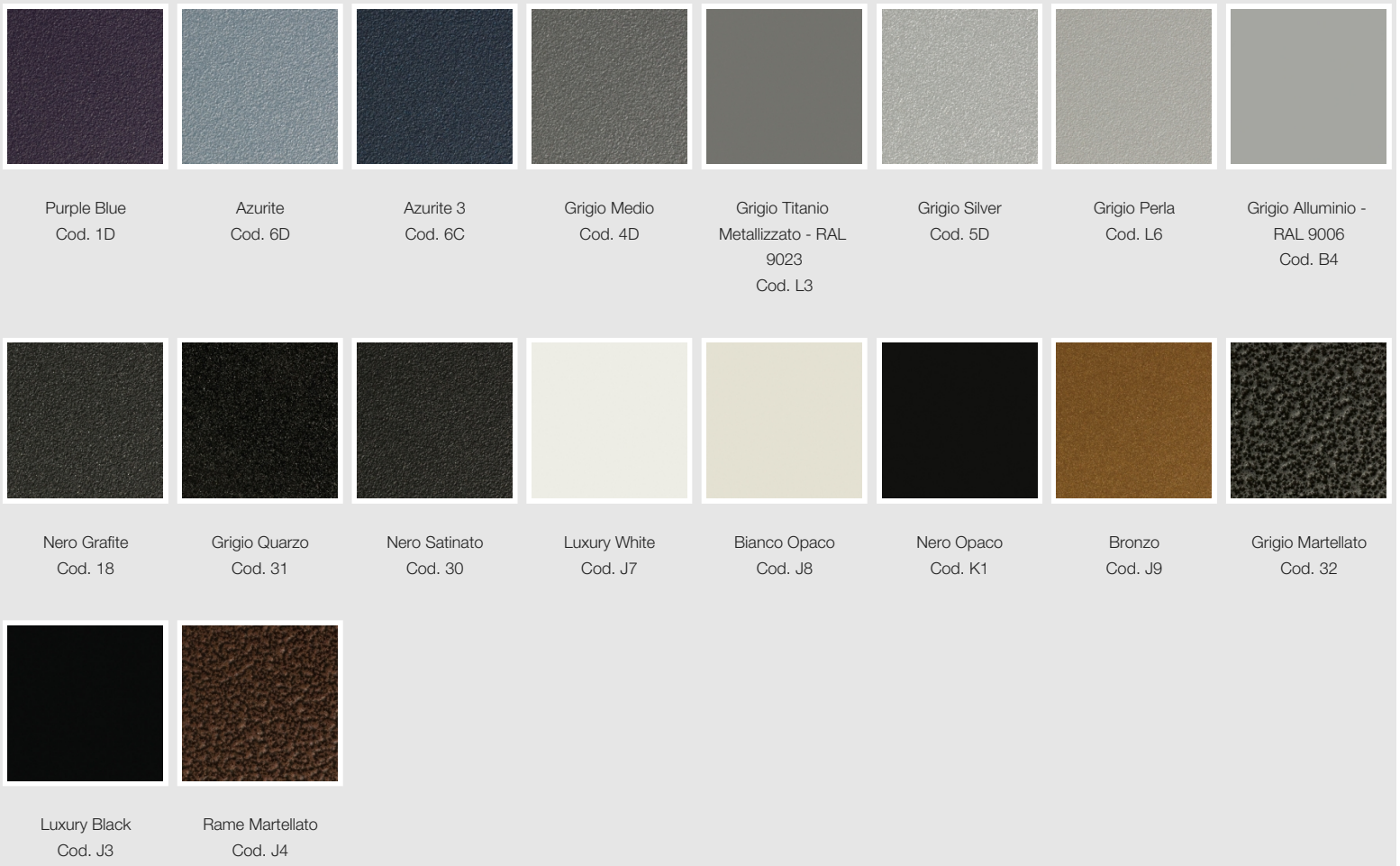
Petra  
Cod. 3D



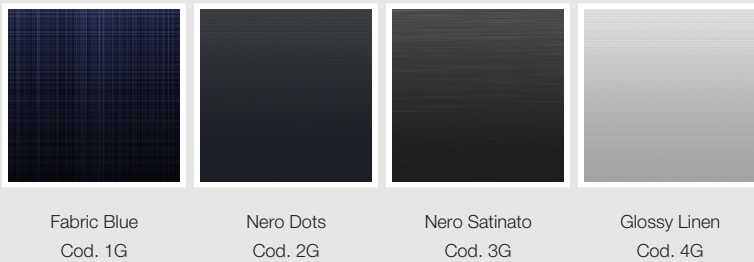
Bruno Tabacco  
Cod. 1B



Flame Red  
Cod. 7D



## SURFACES



The Colors used in this folder are not considered binding. The different technological painting processes and the materials used for the realization can not have a perfect color match with the delivered product. Irsap company reserves the right to introduce at any time whatever modifications necessary to the improvement of the product.