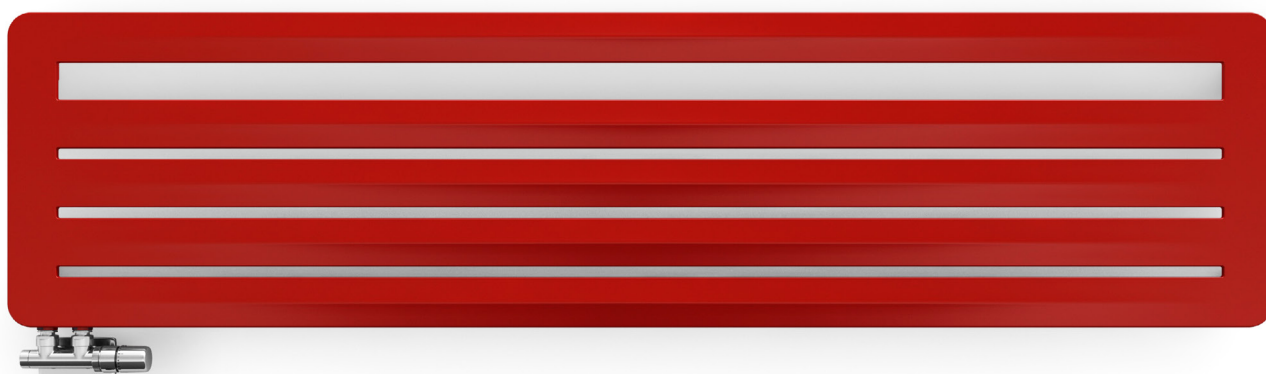


# Aero HG

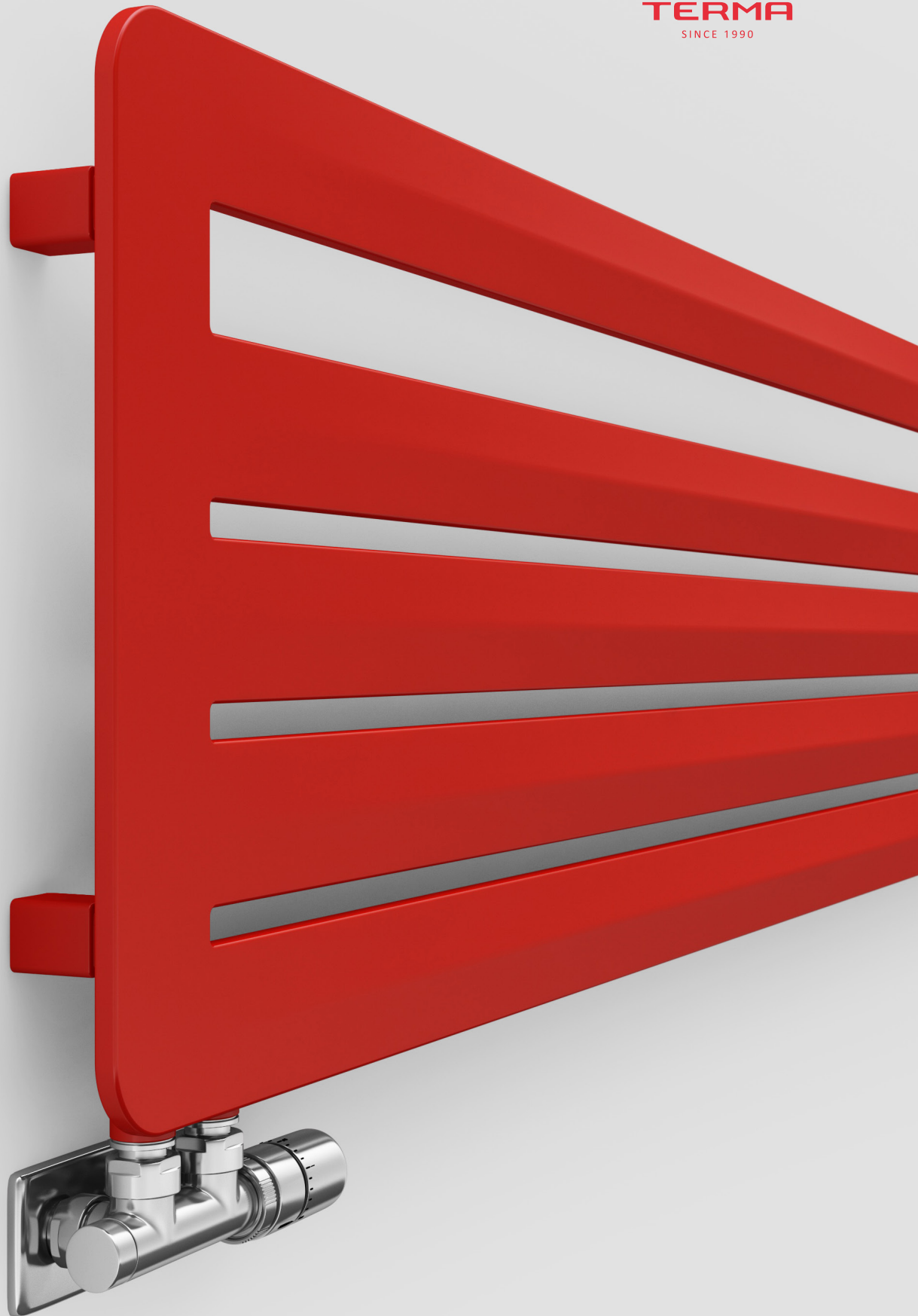


colour included  
in the price



**Aero HG** 455↑ × 1800↔ YL  
colour: RAL 3028

Integrated thermostatic valve, angled, left, chrome  
SLIM thermostatic head, chrome  
Integrated pipe-masking set, chrome

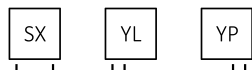




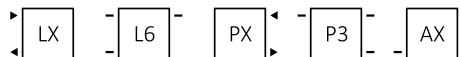
colour included  
in the price

Design: Jacek Ryń

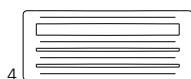
## Standard connection:



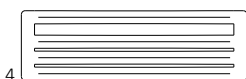
## Optional connection:



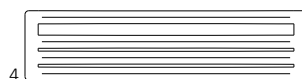
## Available sizes:



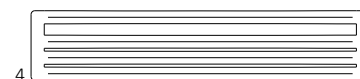
370 x 900  
↕ ↔



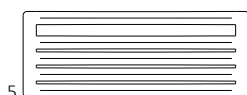
370 x 1200



370 x 1500



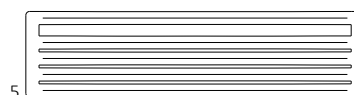
370 x 1800



455 x 1200  
↕ ↔



455 x 1500



455 x 1800

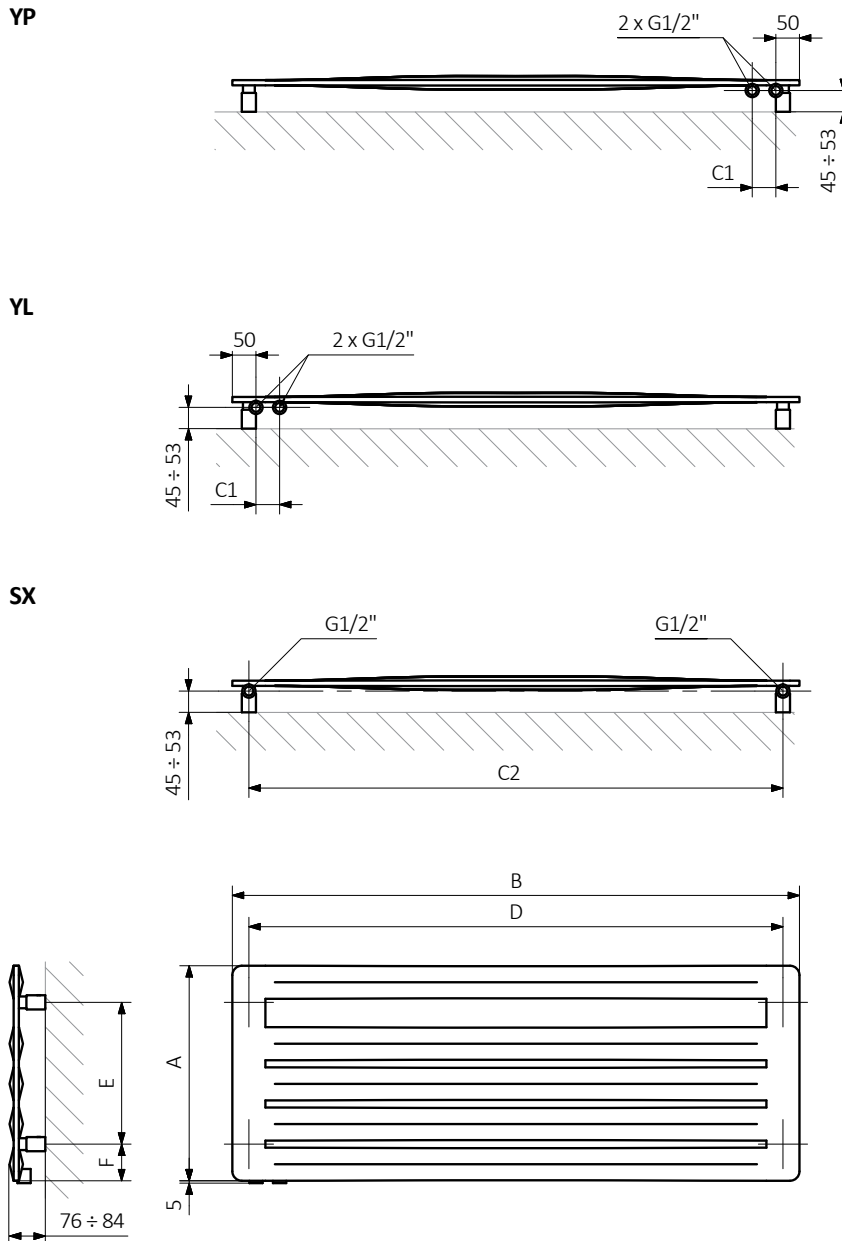
## Specification:

Working pressure: 700 kPa

Maximum operating temperature: 95°C

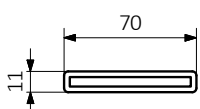
A ↕ [mm]	B ↔ [mm]	C1 [mm]	C2 [mm]	75/65/20°C [W]	55/45/20°C [W]	D [mm]	E [mm]	F [mm]	H [dm³]	G [kg]	Product code <small>Configuration code p. 5</small>
370	900	50	830	290	160	830	215	77,5	3,25	8,97	WGARG037090
370	1200	50	1130	388	214	1130	215	77,5	4,57	11,88	WGARG037120
370	1500	50	1430	485	267	1430	215	77,5	5,90	14,79	WGARG037150
370	1800	50	1730	582	320	1730	215	77,5	7,22	17,70	WGARG037180
455	1200	50	1130	480	265	1130	300	77,5	5,72	14,87	WGARG045120
455	1500	50	1430	600	330	1430	300	77,5	7,37	18,51	WGARG045150
455	1800	50	1730	720	396	1730	300	77,5	9,03	22,15	WGARG045180

## Technical drawing:



A – Height B – Width C1-C5 – Distance between pipe centres D – Horizontal distance between mounting bracket centres  
 E – Vertical distance between mounting brackets F – Distance between a mounting bracket and the bottom of the radiator

### Pipe:





colour included  
in the price

In the table with technical data, the last column lists product codes. When placing an order, please remember to quote the product code followed by the configuration code as shown in the diagram below:

## The construction of a water and dual fuel radiator product and configuration code

WGARG037090

K916SX

PRODUCT CODE

(located in the table for the product)

CONFIGURATION CODE

(supplemented by hand)

### Example Configuration

K 916 SX

Package code

*K - carton box*

Colour code

Connection code

### Epoxy primer

**E** – Code of epoxy primer is an extra processes.

WGARG037090 K916SX **E** — *Extraprocessesoradditionscode*



## Legend



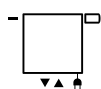
Radiator available in a "water" version.



Radiator suitable for dual fuel connection. Electric heating element can be installed.



Radiator available in electric only version. It comes prefilled with a 'heating medium' and equipped with a heating element. All tested and ready to use.



Connection types dedicated for this radiator. The icon shows the flow and return connections for the radiator as well as the thermostatic valve and heating element position if applicable.



Suggested heating element power output for electric and dual fuel versions.



Weight.



Capacity.



Available in chrome finish.



No additional payment for a color.