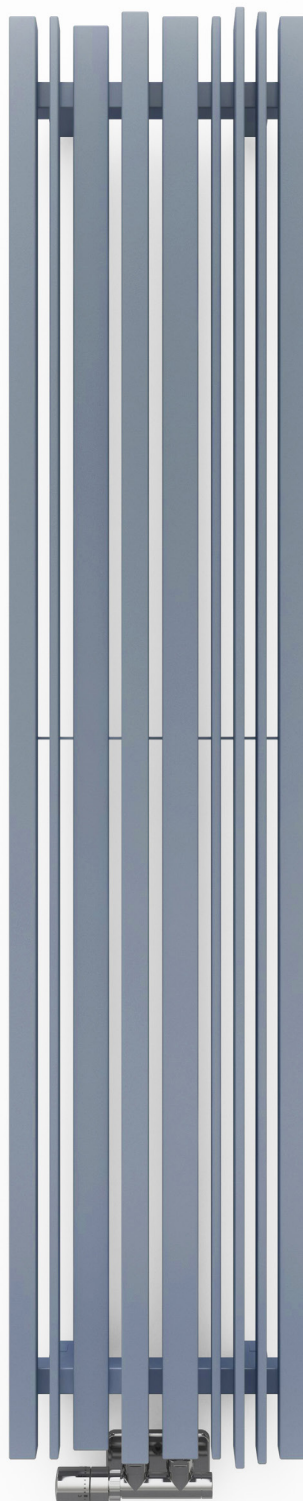
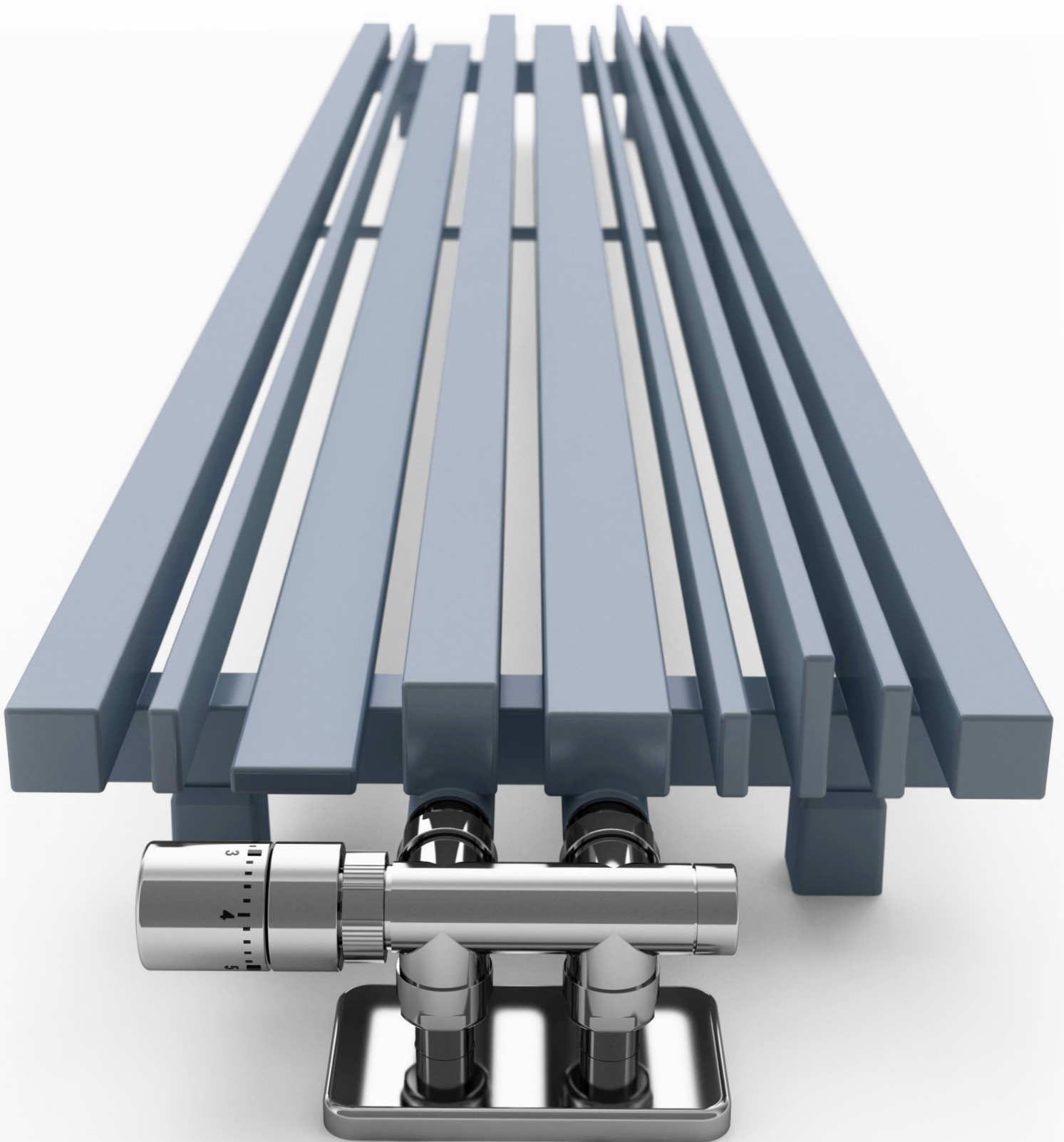


# Sherwood V



**Sherwood V** 1600 $\updownarrow$  × 330 $\leftrightarrow$  ZX  
colour: RAL 5014

Integrated thermostatic valve, angled, right, chrome  
SLIM thermostatic head, chrome  
Integrated pipe-masking set, chrome



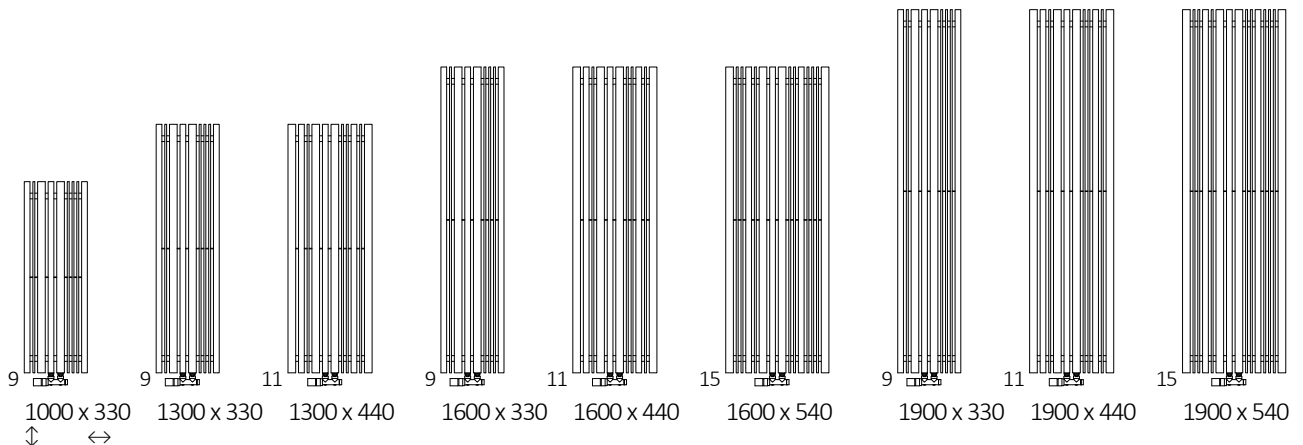
# Sherwood V



## Standard connection:



## Available sizes:



## Specification:

Working pressure: 700 kPa    Maximum operating temperature: 95°C

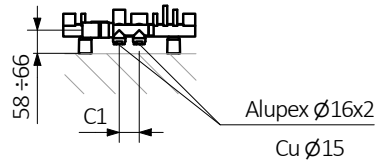
| A ↓<br>[mm] | B ↔<br>[mm] | C1<br>[mm] | 75/65/20°C<br>[W] | 55/45/20°C<br>[W] | [W]  | D<br>[mm] | E<br>[mm] | F<br>[mm] | H<br>[dm³] | [kg]  | Product code<br><small>Configuration code p. 5</small> |
|-------------|-------------|------------|-------------------|-------------------|------|-----------|-----------|-----------|------------|-------|--|
| 1000        | 330         | 50         | 478               | 242               | 600  | 220       | 850       | 75        | 5,53       | 14,62 | WGSTV100033  |
| 1300        | 330         | 50         | 602               | 303               | 600  | 220       | 1150      | 75        | 7,05       | 18,35 | WGSTV130033  |
| 1300        | 440         | 50         | 803               | 404               | 800  | 330       | 1150      | 75        | 9,80       | 22,87 | WGSTV130044  |
| 1600        | 330         | 50         | 727               | 365               | 800  | 220       | 1450      | 75        | 8,58       | 22,09 | WGSTV160033  |
| 1600        | 440         | 50         | 969               | 486               | 1000 | 330       | 1450      | 75        | 11,92      | 27,56 | WGSTV160044  |
| 1600        | 540         | 50         | 1190              | 597               | 1200 | 430       | 1450      | 75        | 13,45      | 34,10 | WGSTV160054  |
| 1900        | 330         | 50         | 851               | 427               | 800  | 220       | 1750      | 75        | 10,10      | 25,83 | WGSTV190033  |
| 1900        | 440         | 50         | 1135              | 569               | 1200 | 330       | 1750      | 75        | 14,05      | 32,24 | WGSTV190044  |
| 1900        | 540         | 50         | 1393              | 698               | 1500 | 430       | 1750      | 75        | 15,84      | 39,96 | WGSTV190054  |

# Sherwood V

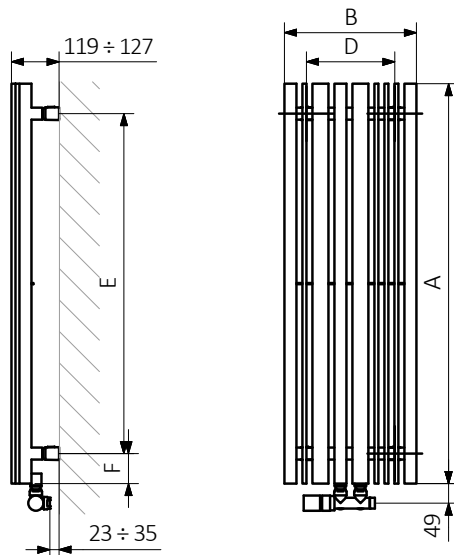
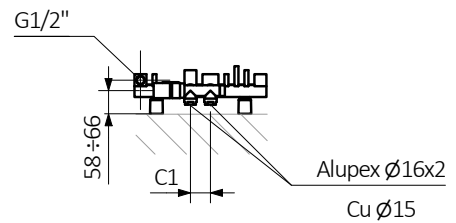


## Technical drawing:

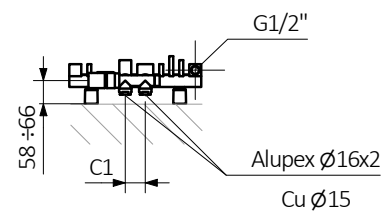
ZX



Z1



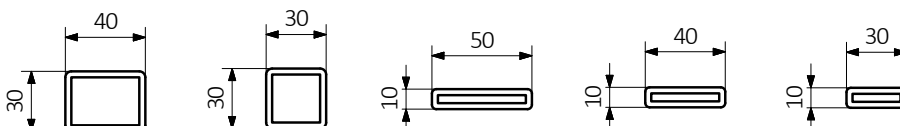
Z8



A – Height B – Width C1-C5 – Distance between pipe centres D – Horizontal distance between mounting bracket centres  
E – Vertical distance between mounting brackets F – Distance between a mounting bracket and the bottom of the radiator

Collector:

Pipe:





In the table with technical data, the last column lists product codes. When placing an order, please remember to quote the product code followed by the configuration code as shown in the diagram below:

## The construction of a water and dual fuel radiator product and configuration code:

WGSTV100033

PRODUCT CODE  
(located in the table for the product)

K916ZX

CONFIGURATION CODE  
(supplemented by hand)

### Example Configuration

**K** **916** **ZX**

Package code  
K - carton box

Colour code

Connection code

## Epoxy primer

**E** - Code of epoxy primer is an extra processes.

WGSTV100033 K916ZX **E** — *Extra processes or additions code*

# Sherwood V



## Legend



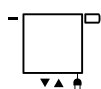
Radiator available in a "water" version.



Radiator suitable for dual fuel connection. Electric heating element can be installed.



Radiator available in electric only version. It comes prefilled with a 'heating medium' and equipped with a heating element. All tested and ready to use.



Connection types dedicated for this radiator. The icon shows the flow and return connections for the radiator as well as the thermostatic valve and heating element position if applicable.



Suggested heating element power output for electric and dual fuel versions.



Weight.



Capacity.



Available in chrome finish.



No additional payment for a color.