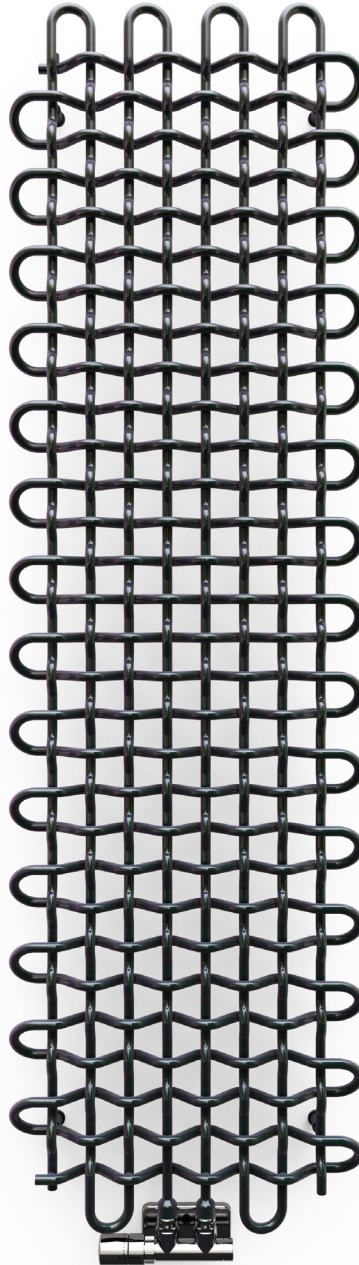


# PLC V



colour included  
in the price

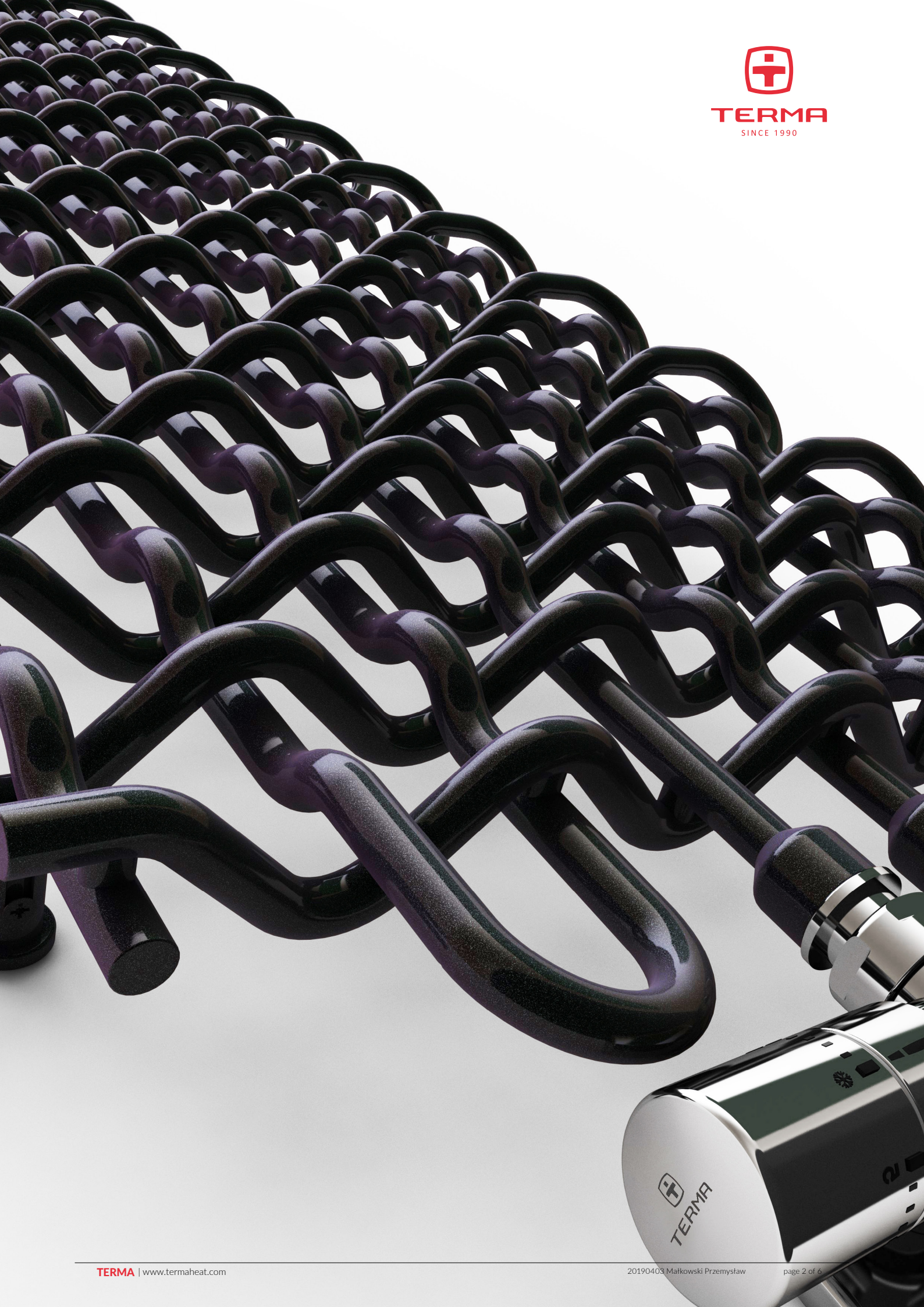


**PLC V** 1600↑ × 463↔ ZX  
colour: Magic Pearl

Integrated thermostatic valve, angled, right, chrome  
SLIM thermostatic head, chrome  
Integrated pipe-masking set, chrome



**TERMA**  
SINCE 1990





colour included  
in the price

Design : *Terma*

## Standard connection:

B ↔ 263:



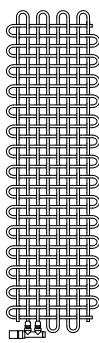
B ↔ 463÷663:



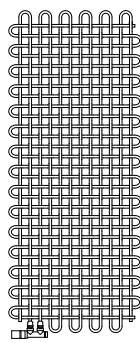
## Available sizes:



1580 x 263  
↓ ↔



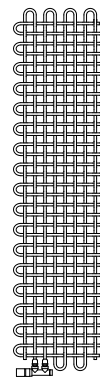
1600 x 463



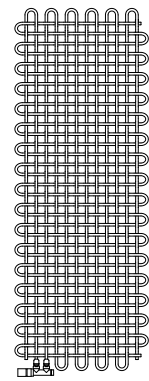
1600 x 663



1780 x 263



1800 x 463



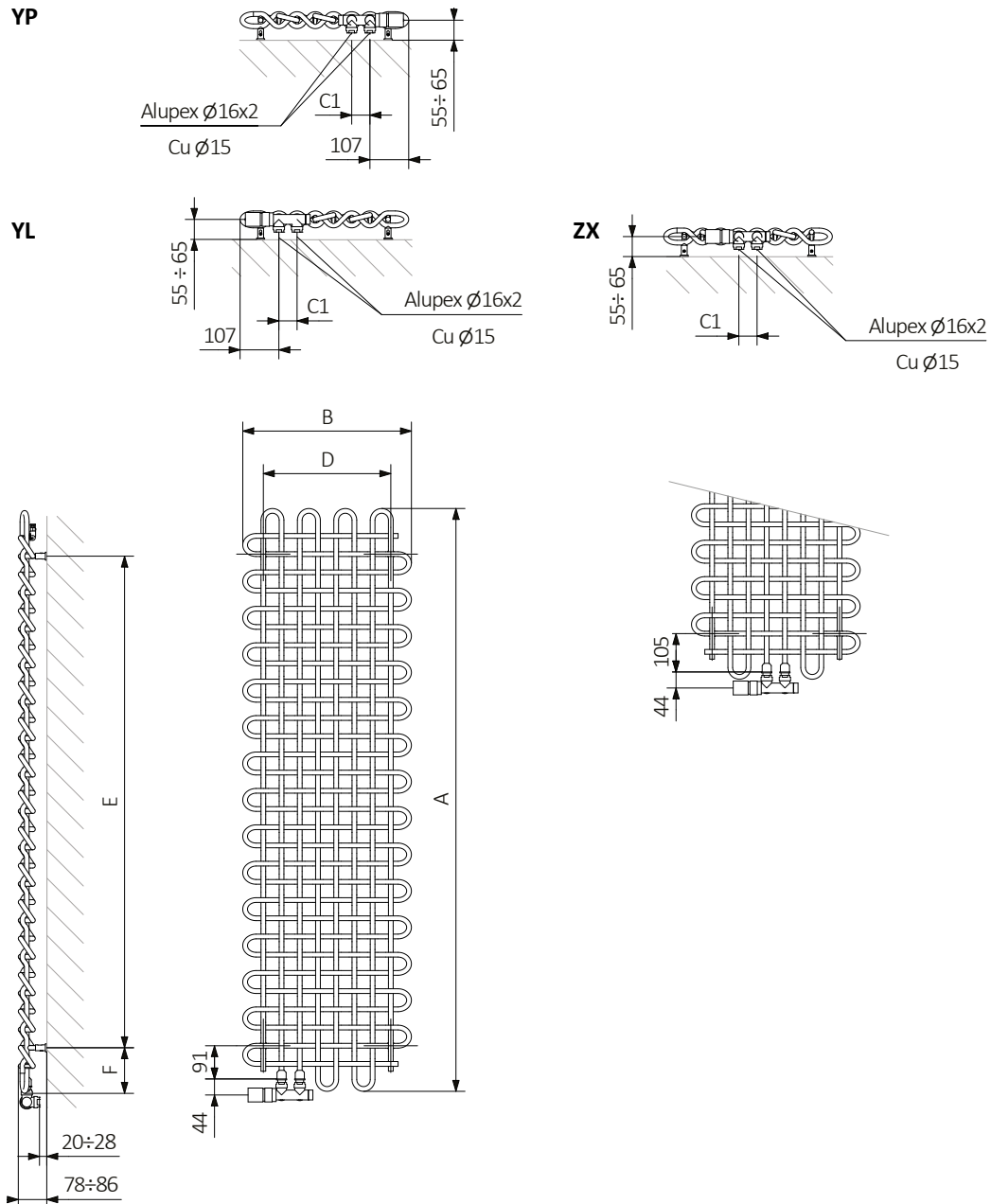
1800 x 663

## Specification:

Working pressure: 1000 kPa    Maximum operating temperature: 95°C

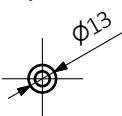
A ↓ [mm]	B ↔ [mm]	C1 [mm]	75/65/20°C [W]	55/45/20°C [W]	D [mm]	E [mm]	F [mm]	U [dm³]	W [kg]	Product code <small>Configuration code p. 5</small>
1580	263	50	331	169	150	1350	105	1,26	7,30	WGPLV158026
1600	463	50	613	312	350	1350	125	2,39	13,60	WGPLV160046
1600	663	50	894	456	550	1350	125	3,51	19,91	WGPLV160066
1780	263	50	373	190	150	1550	105	1,43	8,24	WGPLV178026
1800	463	50	690	352	350	1550	125	2,70	15,36	WGPLV180046
1800	663	50	1007	514	550	1550	125	3,96	22,47	WGPLV180066

## Technical drawing:



A – Height B – Width C1-C5 – Distance between pipe centres D – Horizontal distance between mounting bracket centres  
E – Vertical distance between mounting brackets F – Distance between a mounting bracket and the bottom of the radiator

Pipe :





colour included  
in the price

In the table with technical data, the last column lists product codes. When placing an order, please remember to quote the product code followed by the configuration code as shown in the diagram below:

## The construction of a water radiator product and configuration code:

WGPLV158026

PRODUCT CODE  
(located in the table for the product)

K916ZX

CONFIGURATION CODE  
(supplemented by hand)

### Example Configuration

**K** **916** **ZX**

Package code  
K - carton box

Colour code

Connection code

## Epoxy primer

**E** - Code of epoxy primer is an extra processes.

WGPLV158026 K916ZX **E** — Extra processes or additions code



## Legend



Radiator available in a "water" version.



Radiator suitable for dual fuel connection. Electric heating element can be installed.



Radiator available in electric only version. It comes prefilled with a 'heating medium' and equipped with a heating element. All tested and ready to use.



Connection types dedicated for this radiator. The icon shows the flow and return connections for the radiator as well as the thermostatic valve and heating element position if applicable.



Suggested heating element power output for electric and dual fuel versions.



Weight.



Capacity.



Available in chrome finish.



No additional payment for a color.