



DS-VC02-01

# VALVOLE MANUALI

*Manual radiator valves*

## Serie Victoria

Valvole manuali utilizzabili per l'intercettazione dei fluidi negli impianti di riscaldamento. Tutte le valvole sono dotate di codolo con autotenuta in gomma per facilitare l'installazione.

*Manual radiator valves for the interception of fluids in heating systems. All the valves are equipped with a tailpiece with rubber self-sealing to facilitate the installation.*

ART. 0330 0331

Valvole manuali attacco per tubo rame e multistrato  
*Manual radiator valves, connection for copper and multilayer tubes*

ART. 0332 0333

Valvole manuali attacco per tubo ferro  
*Manual radiator valves, iron tube connection*



Valvole a squadra  
*Angled radiator valves*



Valvole via dritta  
*Straight radiator valves*





**PRESTAZIONI**

Fluidi d'impiego	Acqua, soluzioni glicolate
Percentuale di glicole max	30%
Max pressione d'esercizio	10 bar
Max Temp. d'esercizio	100°C

**PERFORMANCE**

Employed fluids	Water, antifreeze solutions
Max. percentage of glycol	30%
Max working pressure	10 bar
Max working temperature	100°C

**MATERIALI E CARATTERISTICHE TECNICHE**

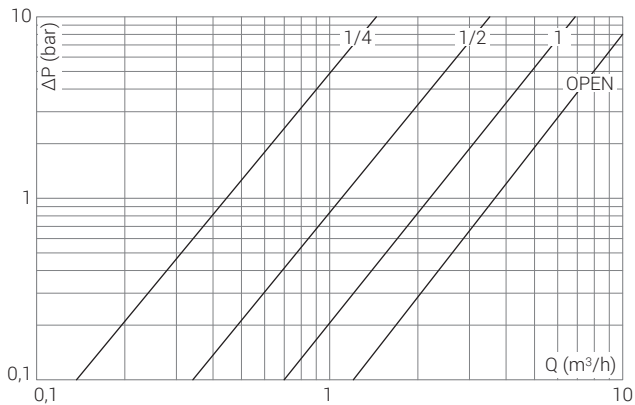
Corpo	
Calotta	Ottone stampato: CW617N UNI EN 12165
Volantino	
Componenti interni	Ottone trafilato: CW614N UNI EN 12164
Elementi di tenuta	Gomma EPDM PEROX

**MATERIALS AND TECHNICAL FEATURES**

Body	
Nut	Pressed brass: CW617N UNI EN 12165
Handwheel	
Inside components	Extruded brass: CW614N UNI EN 12164
Seal elements	EPDM PEROX rubber

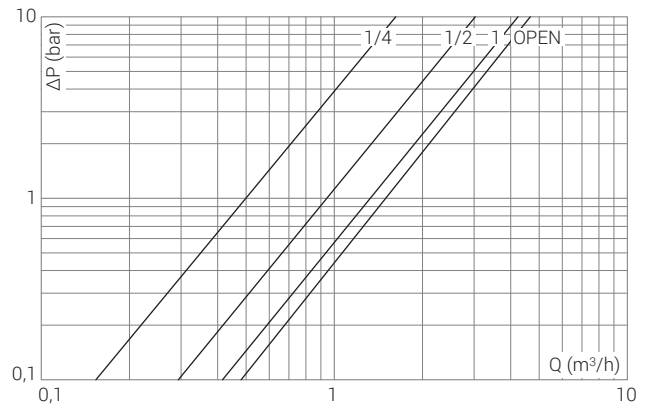
**Diagrammi Diagrams**

**0330 0332** Valvole a squadra  
Angled radiator valves



POS	1/4	1/2	1	OPEN
Kv	0,46	1,13	2,21	3,83

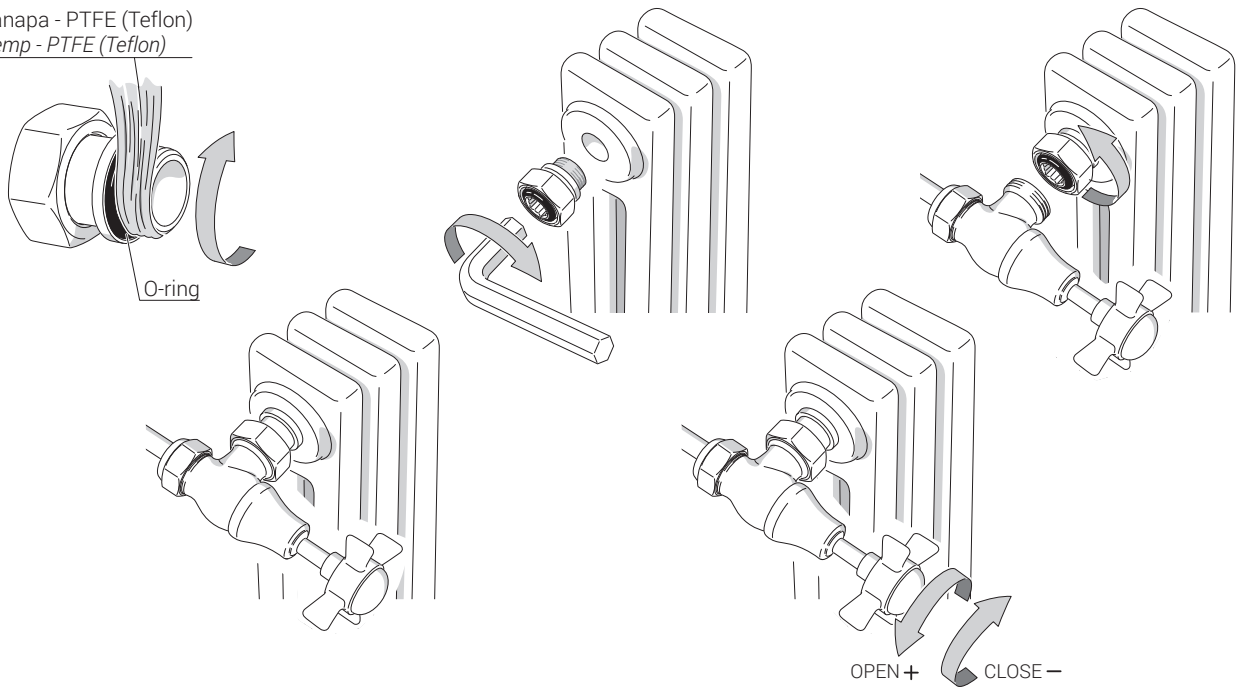
**0331 0333** Valvole via diretta  
Straight radiator valves



POS	1/4	1/2	1	OPEN
Kv	0,50	0,92	1,41	1,54

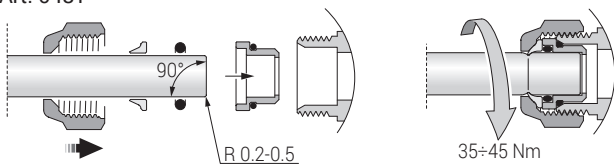
**Istruzioni Instructions**

Canapa - PTFE (Teflon)  
Hemp - PTFE (Teflon)

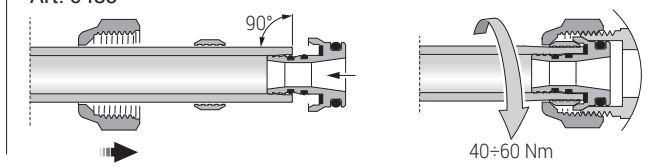


**Installazione raccordi Connection installation**

Art. 0481

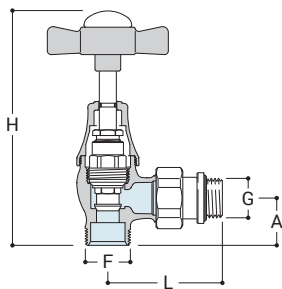


Art. 0483



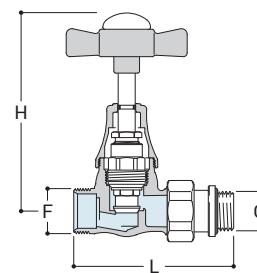
**Disegni Drawings**

**0330**



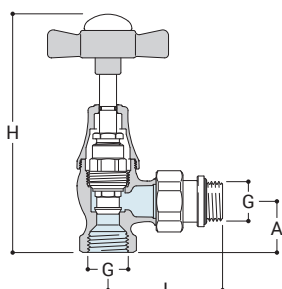
<b>G</b>	<b>F</b>	<b>H</b>	<b>A</b>	<b>L</b>
1/2"	24x19	124	25	61

**0331**



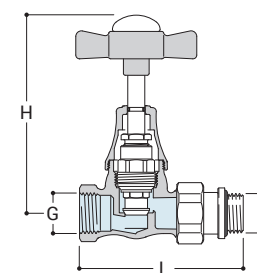
<b>G</b>	<b>F</b>	<b>H</b>	<b>L</b>
1/2"	24x19	105	85

**0332**



<b>G</b>	<b>H</b>	<b>A</b>	<b>L</b>
1/2"	126	27	61

**0333**



<b>G</b>	<b>H</b>	<b>L</b>
1/2"	105	87



### 0481

Raccordo per tubo rame a tenuta O-Ring.

*Copper tube connection with O-ring seal.*



### 0483

Raccordo per tubo multistrato.

*Multilayer tube connection.*



### 0301

Adattatore 1/2" F x 24/19 F

*Adaptor 1/2" F x 24/19 F.*



### 0027

Prolunga per valvole (30 mm).

*Extension for radiator valves (30 mm)*



### 0030

Eccentrico per radiatori.

*Cam for radiators.*



### 0402

Codolo telescopico

*Telescopic tailpiece*



### 0031

Raccordo 1/2" con tubo saldato ø 15 mm.

*1/2" connection with welded pipe ø 15 mm.*



### 0490

Rosetta

*Wall plate*



### 0491

Kit copritubo tondo (2 pezzi).

*Round pipe cover set (2 pcs).*



### A491

Kit di collegamento con rosoni tondi (2 pezzi), ø 15 mm, lunghezza 150 mm x 1/2".

*Round connection set (2 pcs), ø 15 mm, length 150 mm x 1/2"*