

ONE



photo: chrome, spiral cable

Functions and features:

Functionality

The ONE heating element allows you to set two temperature levels. An electronic sensor allows the device to keep to a precise temperature. The device shows the current mode using a multi-coloured LED. The heating element is characterized with a very low power consumption in standby mode.

Timer

The timer automatically turns the heating element off after 2 hours.

Remote Control

The heating element is capable of wireless IR communication with an external wall controller DTIR or TTIR, which enhances the use of the ONE heating element with additional features.

Intelligent Building Systems

In the event of a power failure, the heating element remembers the previous setting (last setting used) enabling collaboration with external timers and intelligent building systems.

Safety

The ONE heating element is equipped with a number of safety features including; a frost protection setting (ANTIFREEZE), a double protection against overheating and an 'active' protection to prevent overheating when used in a dry radiator. Device displays warning indicators in case of malfunction.

Design

The heating element has a metal housing available in chrome or powder coated finish. It is available in five shapes designed to match radiator collectors. The heating element has a single hidden button to activate and change the settings. The ONE supplied with a straight cable without a plug, is also available with a cable-masking cover as an option. There are radiators available with the ONE heating element integrated with the radiator (the only visible part is the status indicator). See: ONE electric heaters.

Colour

Available colours: RAL, Terma special colours and chrome.

Specifications:

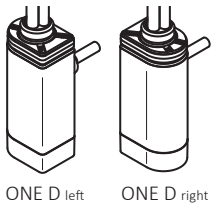
Power supply:	230 V / 50 Hz
Device protection class:	Class I
Radiator connection:	G 1/2"
Ingress protection [IP]:	IPx5

Table configurations:

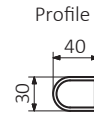
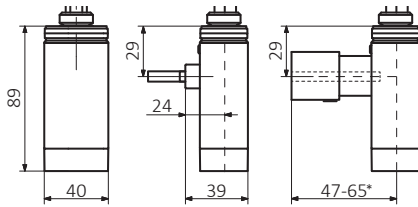
Example of product code: **WE**^{Element power code}**ODL**^{Colour or finish code}**04**^{Cable type and plug code}**T**^{Model code}**CRO**^{Packaging code}**W**

Code elements highlighted in blue

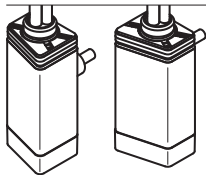
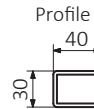
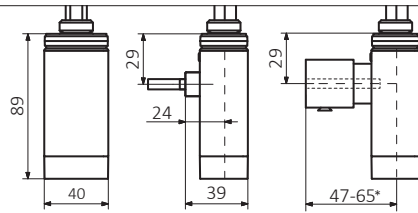
	Model	Power [W]	Packaging	Colour	Cable Type
WE	ODL ONE D left	01 120	T Tube	916 White CRO Chrome or any colour from TERMA palette.	P Straight cable without plug M Straight cable without plug with masking cover W Straight cable with plug U Spiral cable with plug
	ODP ONE D right	02 200			
	OKX ONE 30x30	03 300			
	OPX ONE 30x40	04 400			
	OTL ONE T left	06 600			
	OTP ONE T right	08 800			
	ORX ONE R36	10 1000			



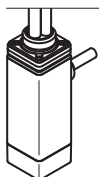
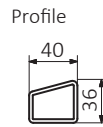
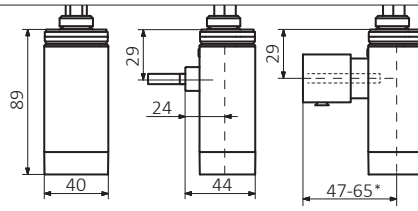
ONE D left ONE D right



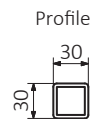
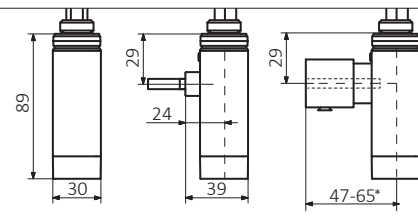
ONE P 30x40



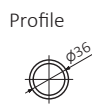
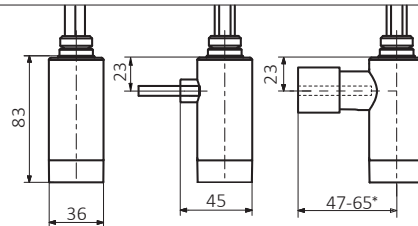
ONE T left ONE T right



ONE K 30x30



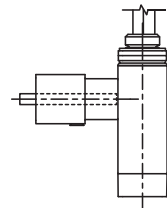
ONE R36



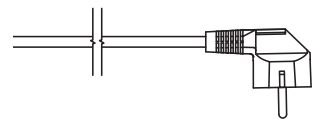
Straight cable without plug



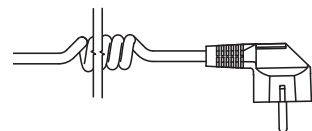
Straight cable without plug with masking cover



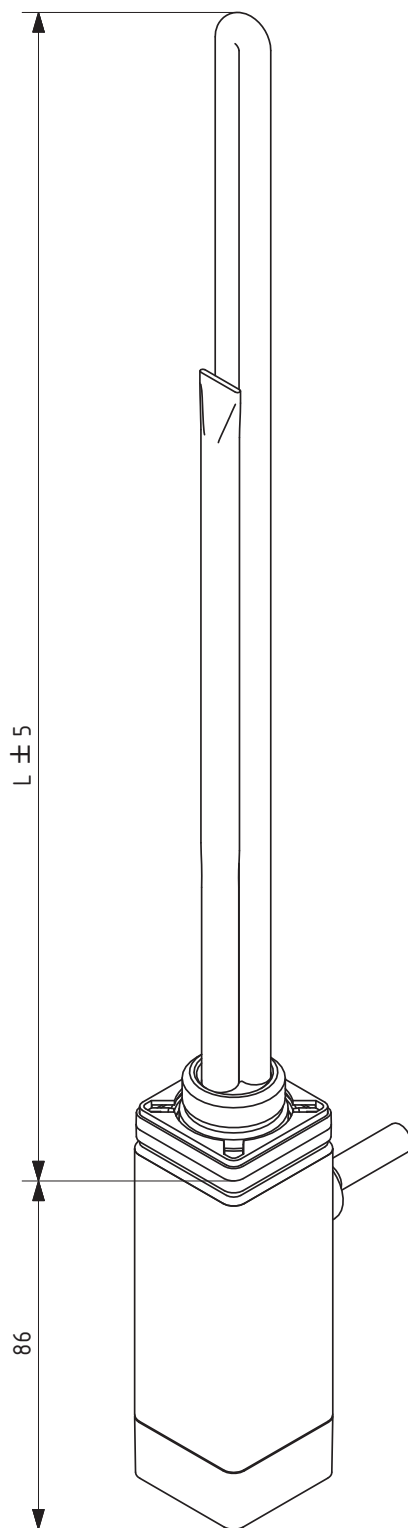
Straight cable with plug



Spiral cable with plug



*The minimum distance between the collector axis and the wall during installation is 50 mm!



L [mm]	310	270	295	330	360	470	560
Power [W]	120	200	300	400	600	800	1000