



MAREA
height 1340 mm, length 500 mm. Matt Blue Dove finish (cod. 4P).

**Technical features:**

- steel towel warmer radiator
- horizontal elements featuring elliptical tubes 50x25 mm
- side manifolds with triangular cross-section 30x30 mm
- manifold threading 1/2" Gas right
- maximum working pressure 4 bar
- maximum working temperature 95°C

Price included:

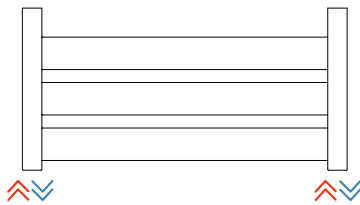
- 4 wall fixing in the same color as the radiator
- 1/2" air vent

Finishes available

Standard White
Classic finished
Special finished
Other RAL colors

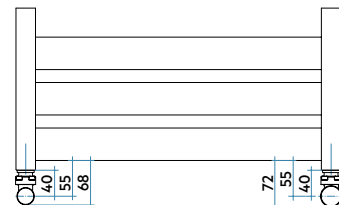
Surcharge

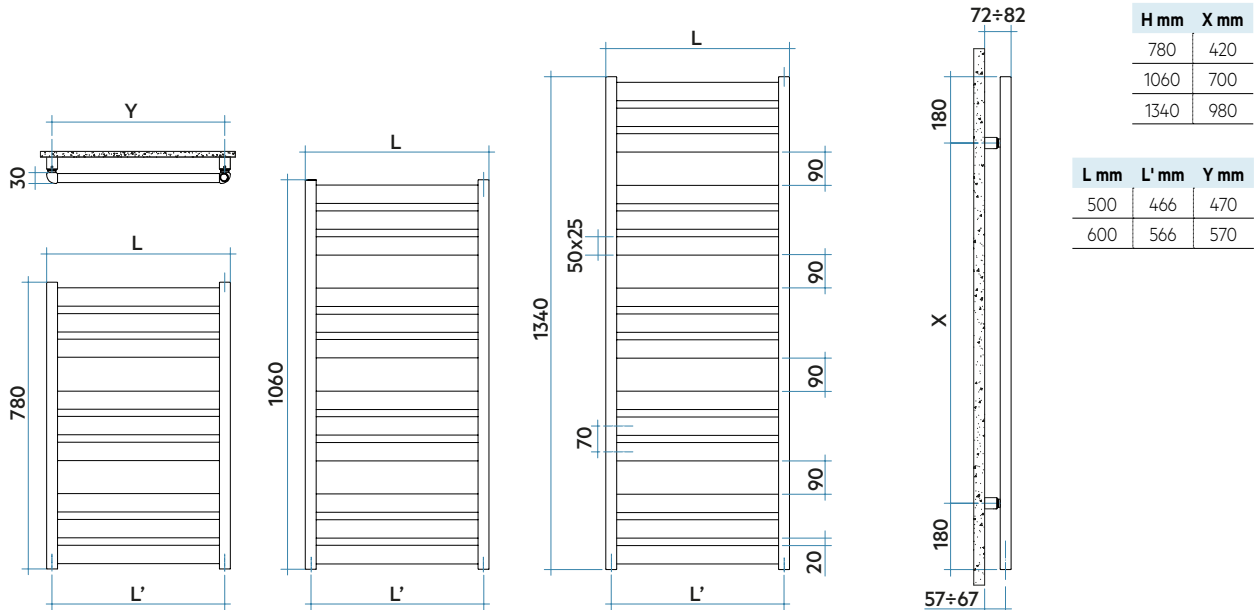
Finishing codes see page 596.

Connections

Laterals

For other types of connections see pag. 414

Connection dimensions with IRSAP valves



Model	Code	Depth mm	Height mm	Width mm	Conn. centre mm	Weight Kg	Cap. lt	Thermal Power				Exp. n.	
								$\Delta t=50^{\circ}\text{C}$ Btu/h	$\Delta t=40^{\circ}\text{C}$ Watt	$\Delta t=30^{\circ}\text{C}$ Watt (*)	$\Delta t=20^{\circ}\text{C}$ Watt		
780 9 rails 2 espaces	TAP050 B 01 IR 01 NNN	30	780	500	470	6,0	4,3	1177	345	264	187	114	1,204
	TAP060 B 01 IR 01 NNN	30	780	600	570	6,9	5,1	1378	404	309	218	134	1,206
1060 12 rails 3 espaces	TAM050 B 01 IR 01 NNN	30	1060	500	470	8,0	5,8	1580	463	352	248	151	1,225
	TAM060 B 01 IR 01 NNN	30	1060	600	570	9,2	6,8	1863	546	415	292	178	1,225
1340 15 rails 4 espaces	TAL050 B 01 IR 01 NNN	30	1340	500	470	10,0	7,2	1982	581	443	313	191	1,212
	TAL060 B 01 IR 01 NNN	30	1340	600	570	11,5	8,5	2320	680	519	367	225	1,207

Mix. Funct.	Code
400	ANRES400WDI
400	ANRES400WDI
400	ANRES400WDI
700	ANRES700WDI
700	ANRES700WDI
1000	ANRES1000WDI

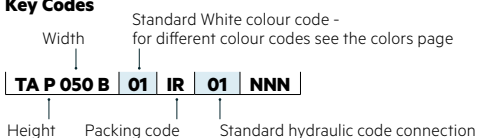
(*) Thanks to the high performance of Irsap MAREA radiators, the ideal Δt for low temperature projects is Δt at 30°C .

For Δt different from 50°C use the formula: $Q=Q_n (\Delta t / 50)^n$

To order a radiator in the mixed version put the code of the Standard version + the code of the corresponding electric heater

Example: Mod. 1340 x 600: **TAL060 B 01 IR 01 NNN** (€ 216,00) + **ANRES1000WDI** (€ 129,77) = Tot. € 345,77

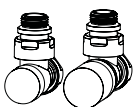
Key Codes



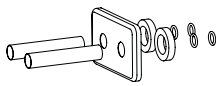
Electric heater for Dual Power

BATHROOMS
RADIATORS

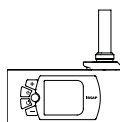
Decorative & Technical Accessories



Kit Valves and
Lockshield valve
Pag. 562



Pipe cover kit
Pag. 566



Electronic Control
Pag. 574

