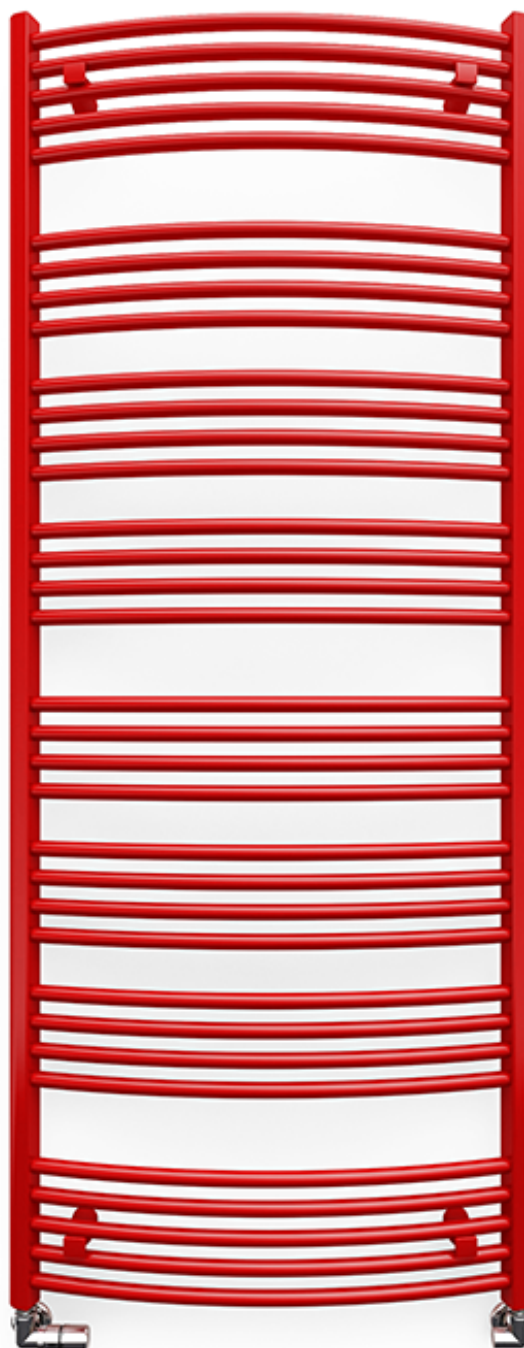
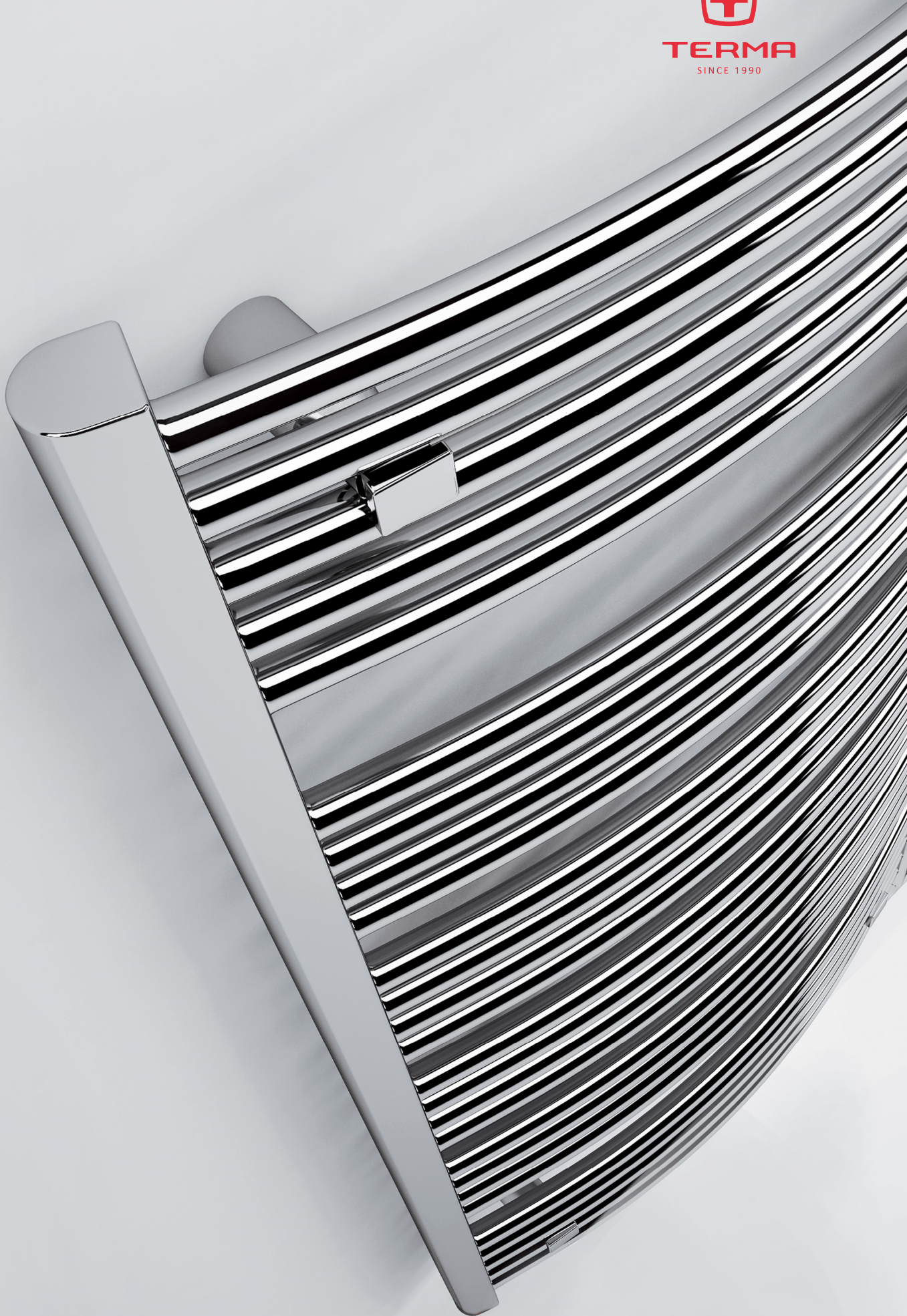


# Domi



**Domi** 1479↓ × 600↔ SX  
colour: RAL 3020

3-axis thermostatic valve set, left, chrome  
Pipe-masking set, chrome





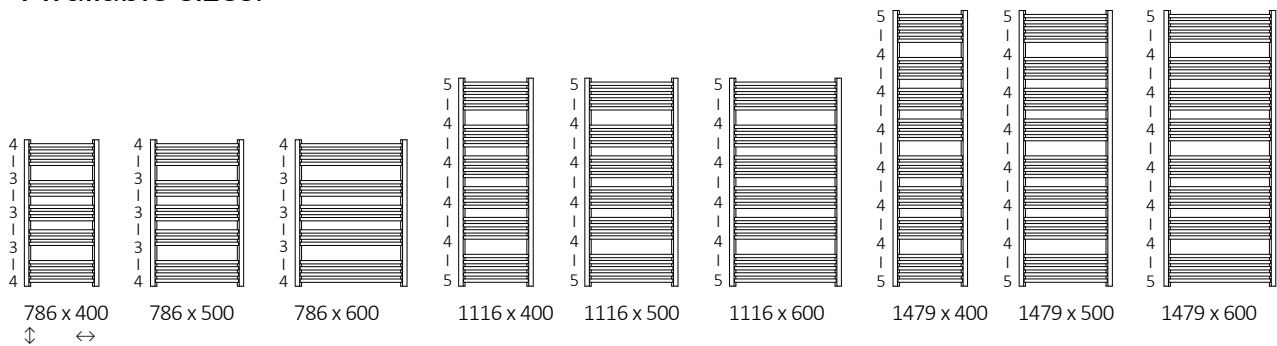
## Standard connection:

## Optional connection:

Electric radiators:





## Available sizes:



## Specification:

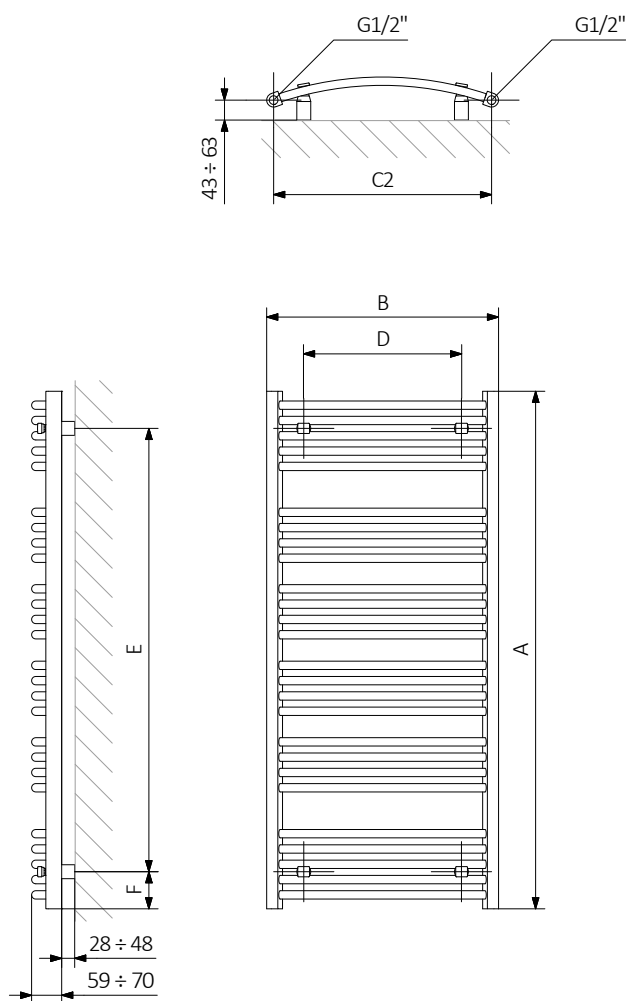
Working pressure: 1000 kPa Maximum operating temperature: 95°C

A ↓ [mm]	B ↔ [mm]	C2 [mm]	75/65/20°C [W]	55/45/20°C [W]	 [W]	D [mm]	E [mm]	F [mm]	H [dm <sup>2</sup> ]	 [kg]	Product code <small>Configuration code p. 5</small>
<b>Paint</b>											
786	400	370	296	161	300	240	626	80	2,13	4,77	WGDOM078040
786	500	470	369	199	400	340	626	80	2,54	5,69	WGDOM078050
786	600	570	435	235	400	440	626	80	2,86	6,61	WGDOM078060
1116	400	370	413	222	400	240	956	80	3,27	7,09	WGDOM111040
1116	500	470	513	274	600	340	956	80	3,76	8,49	WGDOM111050
1116	600	570	620	331	600	440	956	80	4,25	9,89	WGDOM111060
1479	400	370	533	284	600	240	1319	80	4,31	9,28	WGDOM147040
1479	500	470	663	346	600	340	1319	80	4,95	11,12	WGDOM147050
1479	600	570	800	425	800	440	1319	80	5,59	12,95	WGDOM147060
<b>Plating</b>											
786	400	370	207	106	200	240	626	80	2,13	4,58	WGDOM078040
786	500	470	258	132	300	340	626	80	2,54	5,45	WGDOM078050
786	600	570	305	155	300	440	626	80	2,86	6,33	WGDOM078060
1116	400	370	289	147	300	240	956	80	3,27	6,79	WGDOM111040
1116	500	470	359	183	400	340	956	80	3,76	8,14	WGDOM111050
1116	600	570	434	221	400	440	956	80	4,25	9,48	WGDOM111060
1479	400	370	373	190	400	240	1319	80	4,31	8,90	WGDOM147040
1479	500	470	464	237	400	340	1319	80	4,95	10,66	WGDOM147050
1479	600	570	560	286	600	440	1319	80	5,59	12,42	WGDOM147060



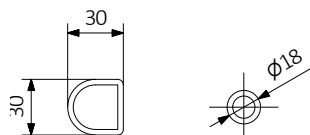
## Technical drawing:

SX



A – Height B – Width C1-C5 – Distance between pipe centres D – Horizontal distance between mounting bracket centres  
E – Vertical distance between mounting brackets F – Distance between a mounting bracket and the bottom of the radiator

Collector : Pipe :





In the table with technical data, the last column lists product codes. When placing an order, please remember to quote the product code followed by the configuration code as shown in the diagram below:

## The construction of a water and dual fuel radiator product and configuration code:

WGDOM078040

PRODUCT CODE  
(located in the table for the product)

K916SX

CONFIGURATION CODE  
(supplemented by hand)

### Example Configuration

**K 916 SX**

Package code    Colour code    Connection code  
*K - carton box*

## Construction of electric heater configuration code:

WLDOM078040

PRODUCT CODE  
(located in the table for the product)

K916E1DRYW

CONFIGURATION CODE  
(supplemented by hand)

### Example Configuration

**K 916 E1 DRY W**

Package code    Colour code    Connection code    Heating element code    Type of heating element cable code  
*K - carton box*

## Epoxy primer

**E** – Code of epoxy primer is an extra processes.

WGDOM078040 K916SX **E** — *Extraprocesses or additions code*



## Legend



Radiator available in a "water" version.



Radiator suitable for dual fuel connection. Electric heating element can be installed.



Radiator available in electric only version. It comes prefilled with a 'heating medium' and equipped with a heating element. All tested and ready to use.



Connection types dedicated for this radiator. The icon shows the flow and return connections for the radiator as well as the thermostatic valve and heating element position if applicable.



Suggested heating element power output for electric and dual fuel versions.



Weight.



Capacity.



Available in chrome finish.



No additional payment for a color.