
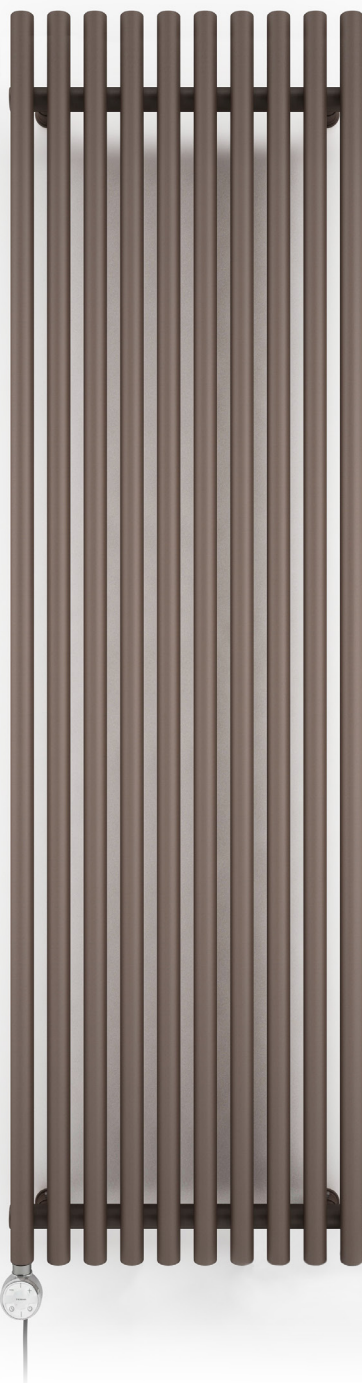


Tune VWS E



 colour included
in the price



Tune VWS 1800⇕ × 490⇔ E1
colour: Noble Brown

MOA heating element, chrom



TERMA
SINCE 1990



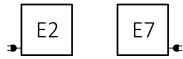


colour included
in the price

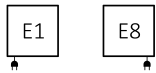
Projekt : *Terma*

Connections standardowe:




A ⇅ 600:



A ⇅ 1800:



Specification:

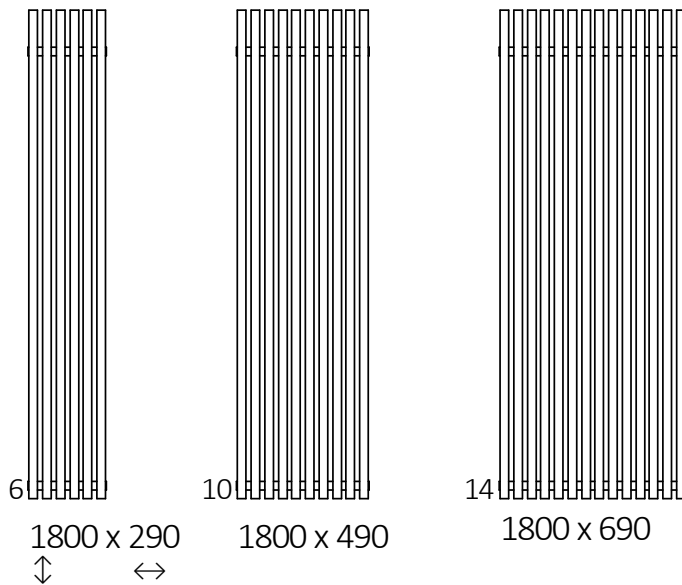
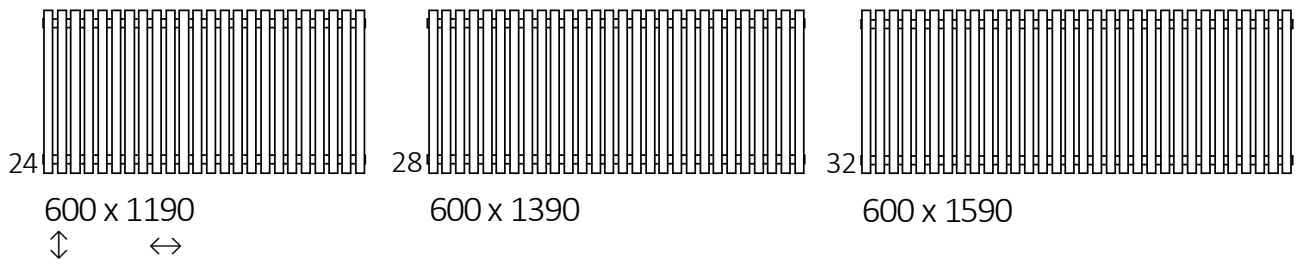
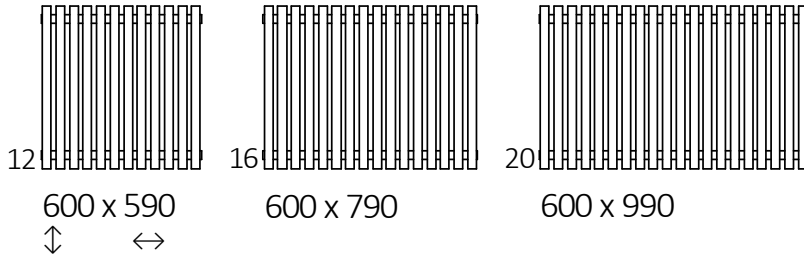
A ⇅ [mm]	B ↔ [mm]	 [W]	D [mm]	E [mm]	F [mm]	 [dm ³]	 [kg]	Product code <small>Configuration code p. 7</small>
600	590	400	490	500	50	5,77	13,24	WLTSV060059
600	790	600	690	500	50	7,69	17,60	WLTSV060079
600	990	800	890	500	50	9,62	21,95	WLTSV060099
600	1190	1000	1090	500	50	11,54	26,31	WLTSV060119
600	1390	1000	1290	500	50	13,47	30,66	WLTSV060139
600	1590	1200	1490	500	50	15,26	34,62	WLTSV060159
1800	290	600	190	1600	50	7,83	17,57	WLTSV180029
1800	490	1000	390	1600	50	13,06	29,18	WLTSV180049
1800	690	1500	590	1600	50	18,29	40,77	WLTSV180069

Tune VWS E



colour included
in the price

Available sizes:



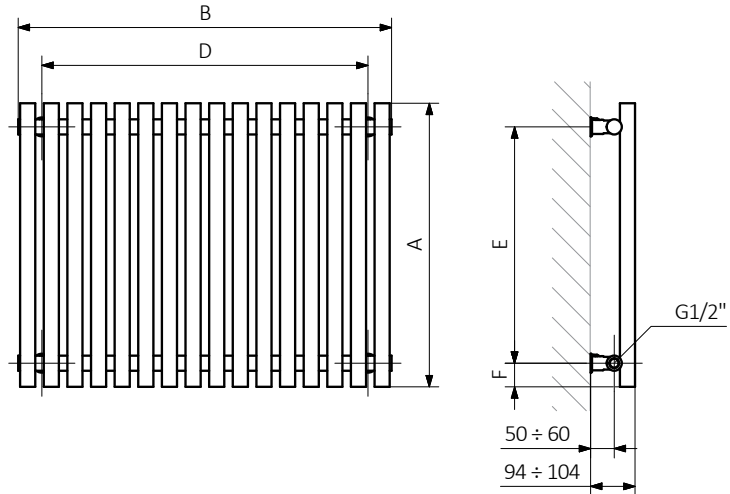
Tune VWS E



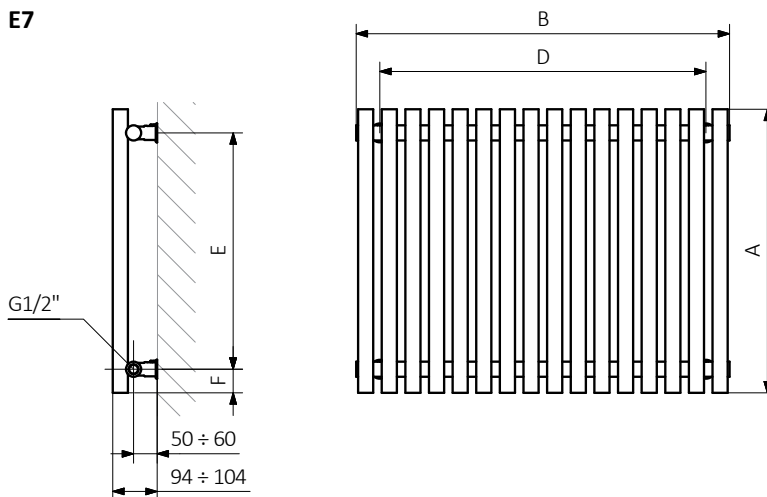
colour included
in the price

Technical drawing:

E2

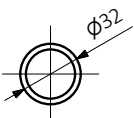


E7



A – Height B – Width C1-C5 – Distance between pipe centres D – Horizontal distance between mounting bracket centres
E – Vertical distance between mounting brackets F – Distance between a mounting bracket and the bottom of the radiator

Collector :

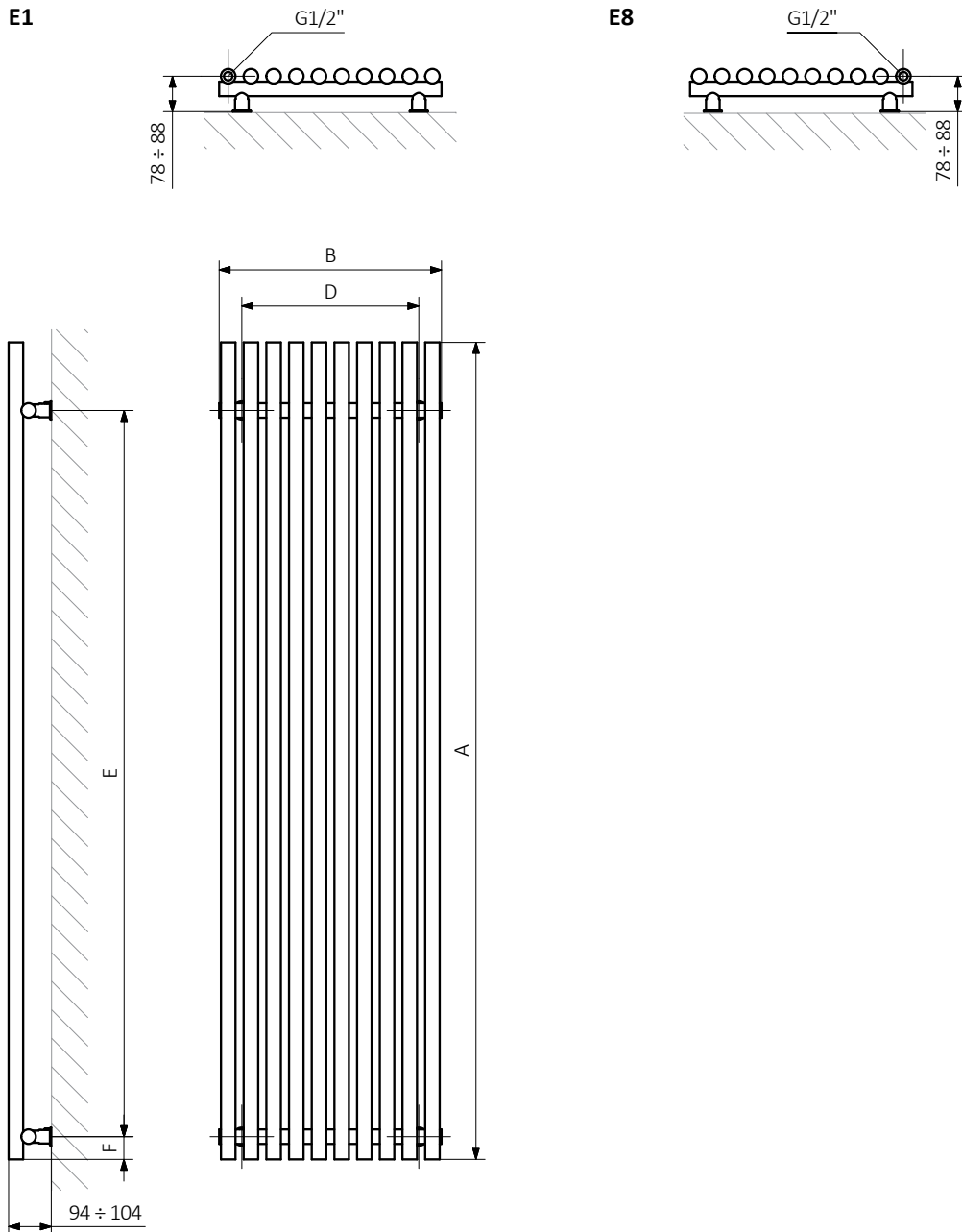


Tune VWS E



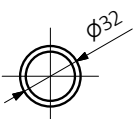
colour included
in the price

Technical drawing:



A – Height B – Width C1-C5 – Distance between pipe centres D – Horizontal distance between mounting bracket centres
E – Vertical distance between mounting brackets F – Distance between a mounting bracket and the bottom of the radiator

Collector :





colour included
in the price

In the table with technical data, the last column lists product codes. When placing an order, please remember to quote the product code followed by the configuration code as shown in the diagram below:

Construction of electric heater configuration code:

WLTSV060059

K916E1MOAM

PRODUCT CODE
(located in the table for the product)

CONFIGURATION CODE
(supplemented by hand)

Example Configuration

K **916** **E1** **MOA** **M**

Package code Colour code Connection code Heating element code Type of heating element cable code
K - carton box

Epoxy primer

E – Code of epoxy primer is an extra processes.

WLTSV060059 K916E1 **E** — *Extra processes or additions code*

Tune VWS E



colour included
in the price

Legenda



Radiator available in a "water" version.



Radiator suitable for dual fuel connection. Electric heating element can be installed.



Radiator available in electric only version. It comes prefilled with a 'heating medium' and equipped with a heating element. All tested and ready to use.



Connection types dedicated for this radiator. The icon shows the flow and return connections for the radiator as well as the thermostatic valve and heating element position if applicable.



Suggested heating element power output for electric and dual fuel versions.



Weight.



Capacity.



Available in chrome finish.



No additional payment for a color.