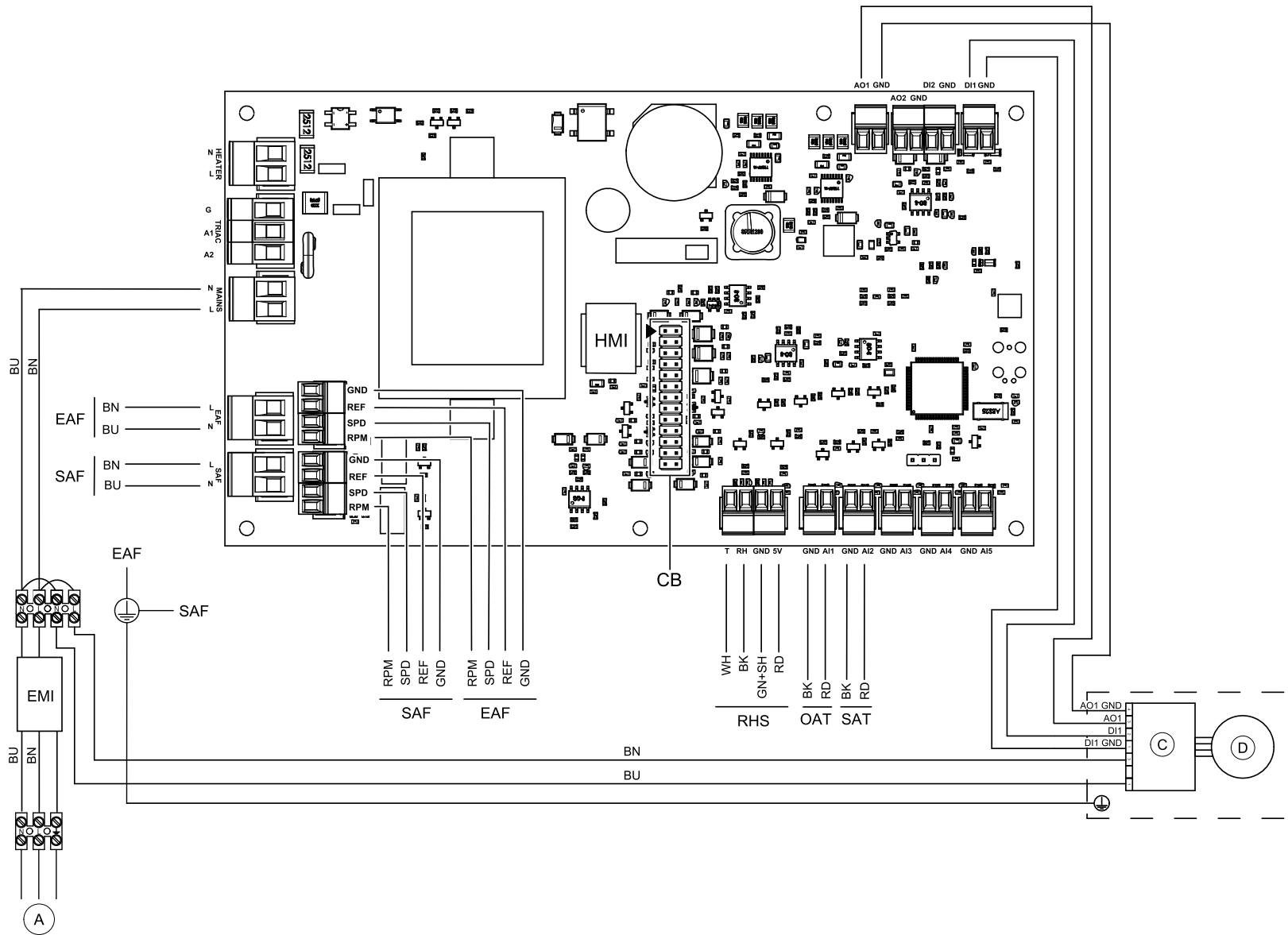
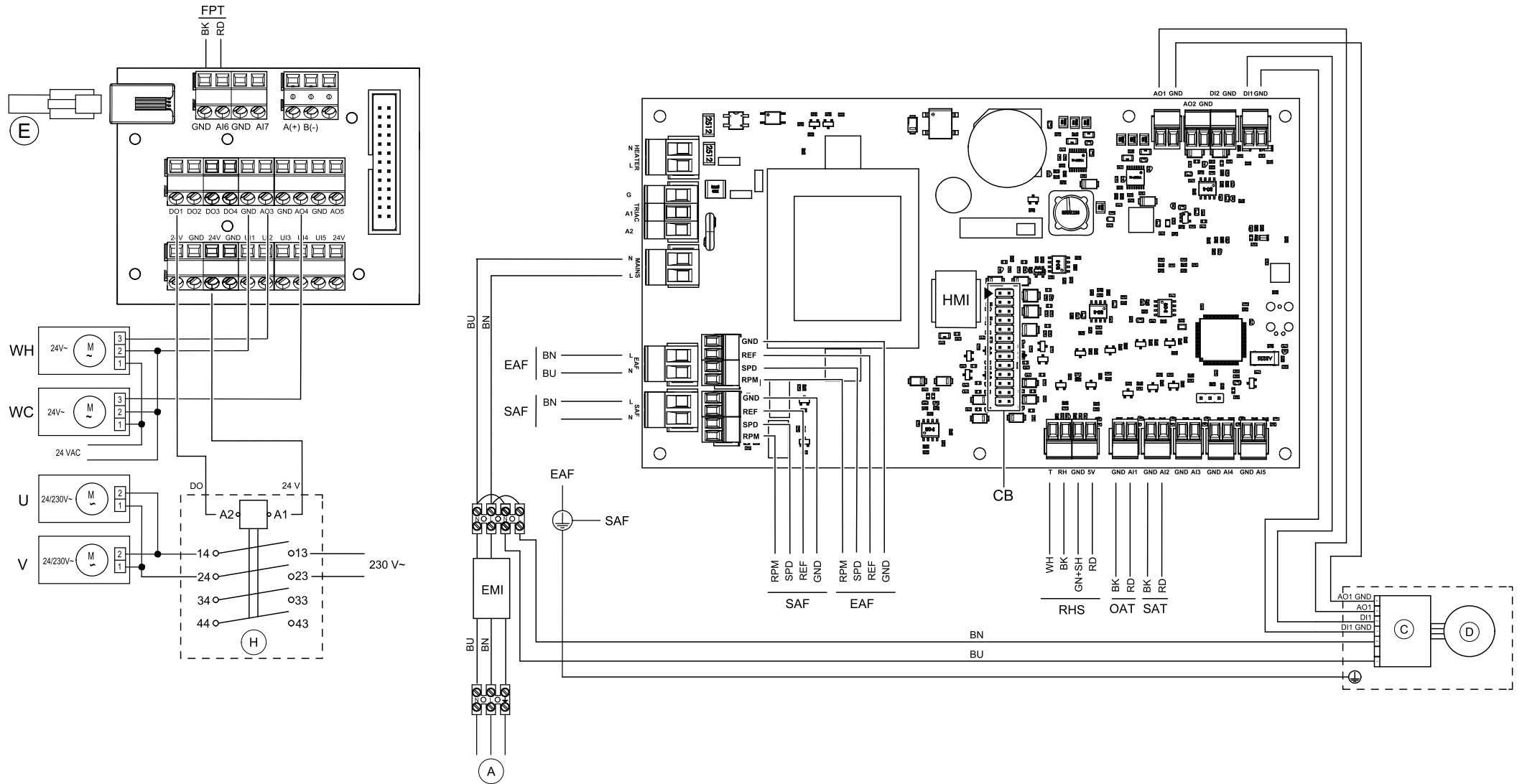


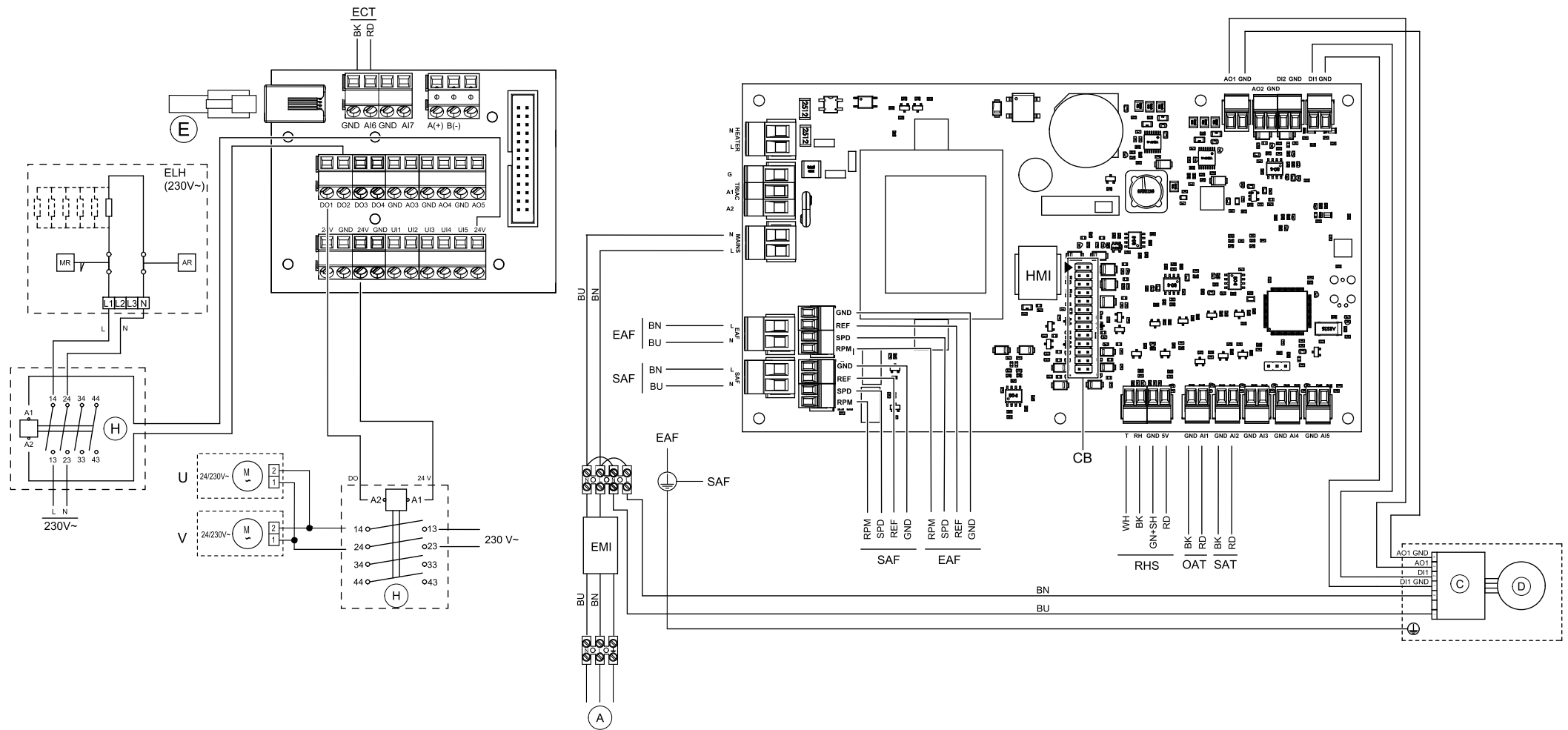
Standard configuration



Units with hot water heating + water cooling



Units with electrical pre-heater



Symbol	Description
SAF	Supply air fan.
EAF	Extract air fan.
SAT	Supply air temperature sensor. <sup>1</sup>
ECT	Extra controller temperature sensor
MR	Overheat protection with manual reset.
AR	Overheat protection with automatic reset.
H	Contactora for electrical re-heater battery on/off switch. <sup>2</sup>
EMI	Electromagnetic interference filter for 230 V AC.
HMI	Integrated control panel
ELH	Electrical heater battery.
CB	Connection to external connection board.
OHT	Overheat protection sensor. <sup>2</sup>
OAT	Outdoor air sensor.
FPS	Frost protection sensor <sup>3</sup>
EMT2	Emergency thermostat, manual reset 120°C (normally closed contact)
EMT1	Emergency thermostat, automatic reset 60°C (normally closed contact)
RGS	Rotor guard sensor.
RHS	Internal relative humidity/Extract air temperature sensor.
E	External control panel.
C	Motor control (bypass damper).
D	Damper motor 230V~ (bypass damper).
A	Mains supply 230 V~.
WH	Water valve actuator, heating. <sup>4</sup>
WC	Water valve actuator, cooling. <sup>5</sup>
U	Damper motor Outside air.
V	Damper motor Exhaust air.
BU	Blue.
BN	Brown.
BK	Black.

RD	Red.
YE	Yellow.
GY	Gray.
WH	White.
GN	Green.

- <sup>1</sup> For water heating/cooling battery,
- <sup>2</sup> Units with electrical re-heater battery.
- <sup>3</sup> For water heating battery.
- <sup>4</sup> Water heater can be connected to any free analog output (AO) either on connection board or main board and then configured in HMI.
- <sup>5</sup> Water cooler can be connected to any free analog output (AO) either on connection board or main board and then configured in HMI.