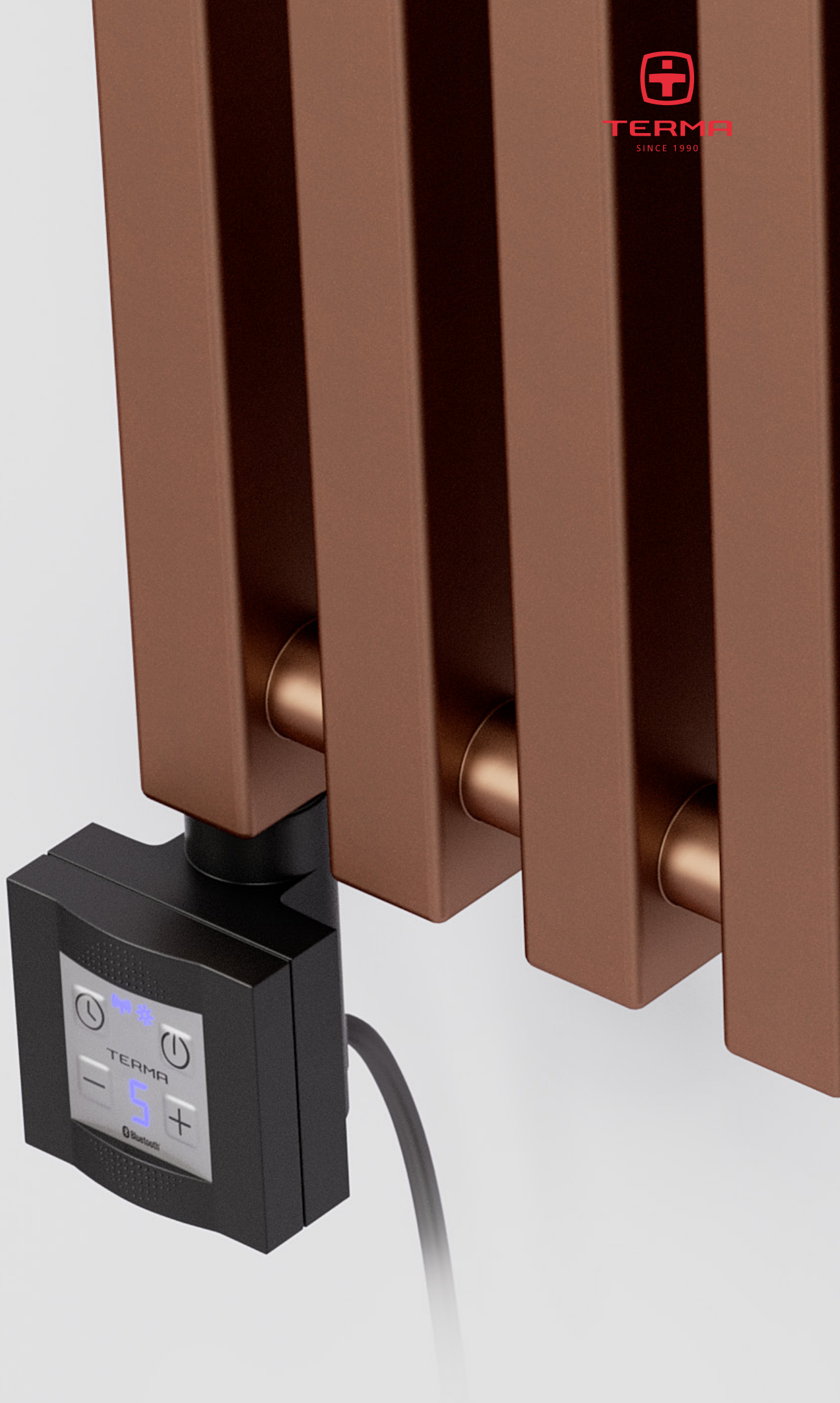


Triga M E



Triga M E 1700↓ × 880⇔ E1
colour: Copper

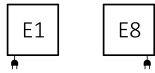
KTX 4 BLUE heating element, black



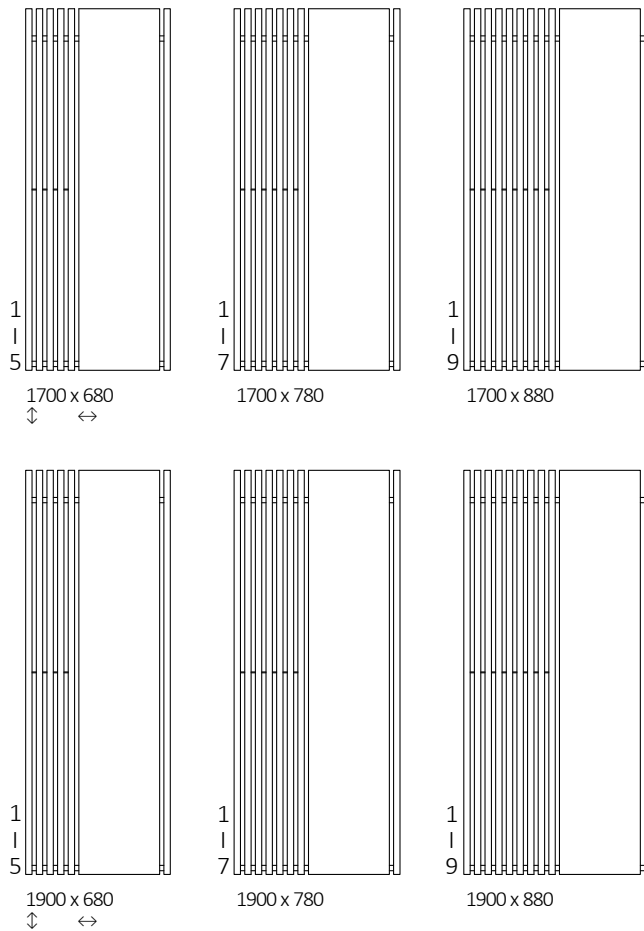
Triga M E






Connections:



Available sizes:



Specification:

A ↓ [mm]	B ↔ [mm]	 [W]	D [mm]	E [mm]	F [mm]	 [dm ³]	 [kg]	Product code <small>Configuration code p. 5</small>
1700	680	600	650	1520	90	10,55	37,76	WLTRL170068
1700	780	800	750	1520	90	13,97	46,21	WLTRL170078
1700	880	1000	850	1520	90	17,39	54,65	WLTRL170088
1900	680	800	650	1720	90	11,75	42,01	WLTRL190068
1900	780	1000	750	1720	90	15,57	51,42	WLTRL190078
1900	880	1200	850	1720	90	19,39	60,83	WLTRL190088

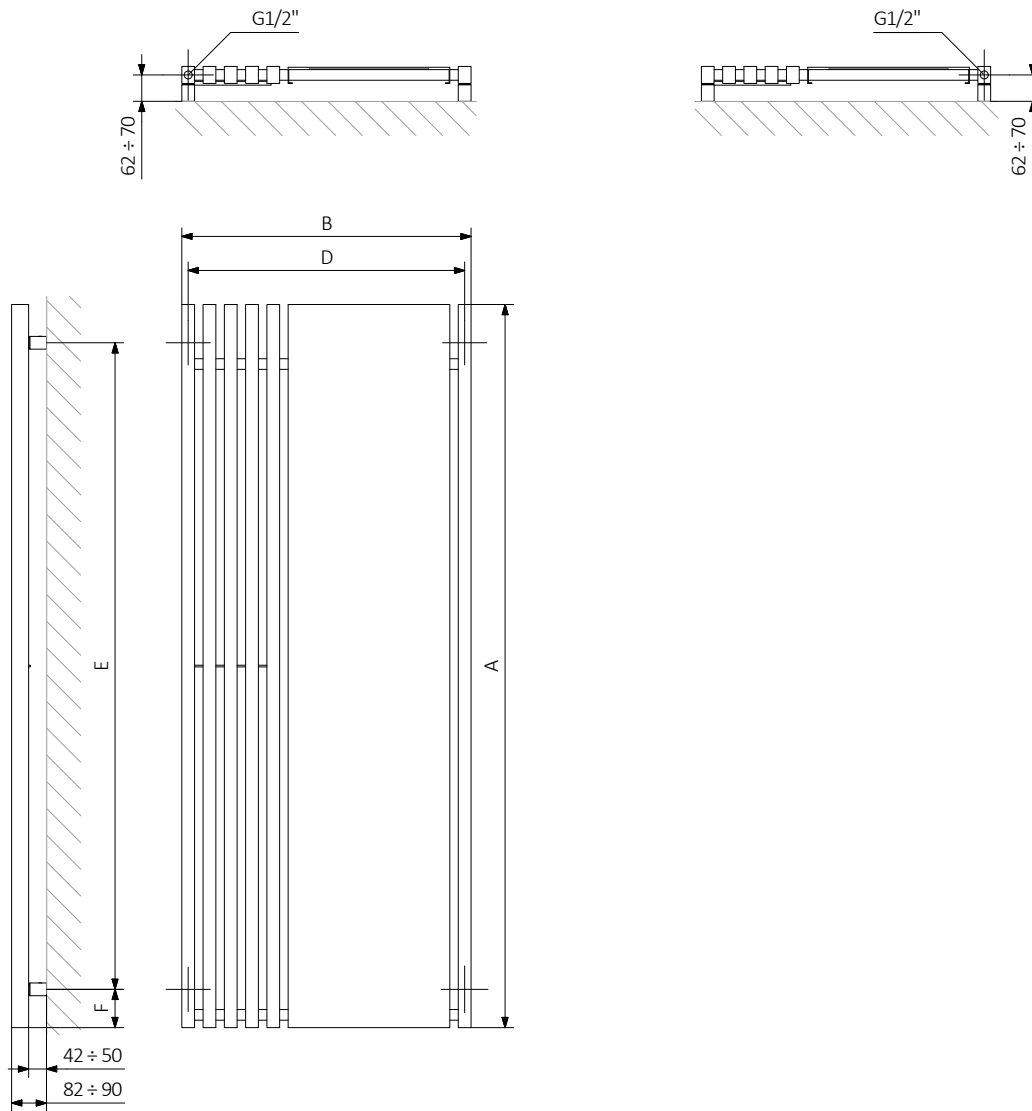
Triga M E



Technical drawing:

E1

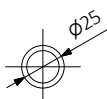
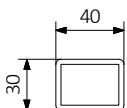
E8



A – Height B – Width C1-C5 – Distance between pipe centres D – Horizontal distance between mounting bracket centres
E – Vertical distance between mounting brackets F – Distance between a mounting bracket and the bottom of the radiator

Collector:

Pipe:





In the table with technical data, the last column lists product codes. When placing an order, please remember to quote the product code followed by the configuration code as shown in the diagram below:

Construction of electric heater configuration code:

WLTRL170068

PRODUCT CODE
(located in the table for the product)

K916E1K4BM

CONFIGURATION CODE
(supplemented by hand)

Example Configuration

K 916 E1 K4B M

Package code Colour code Connection code Heating element code Type of heating element cable code
K - carton box

Epoxy primer

E – Code of epoxy primer is an extra processes.

WLTRL170068 K916E1 **E** — *Extra processes or additions code*



Legenda



Radiator available in a "water" version.



Radiator suitable for dual fuel connection. Electric heating element can be installed.



Radiator available in electric only version. It comes prefilled with a 'heating medium' and equipped with a heating element. All tested and ready to use.



Connection types dedicated for this radiator. The icon shows the flow and return connections for the radiator as well as the thermostatic valve and heating element position if applicable.



Suggested heating element power output for electric and dual fuel versions.



Weight.



Capacity.



Available in chrome finish.



No additional payment for a color.