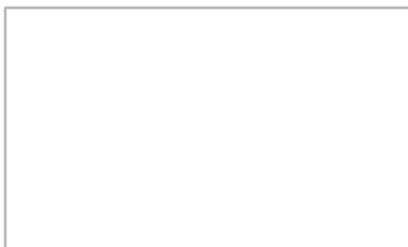


# Vzorník barev Kermi

Inovativní vzorník barev. V souladu s požadavky doby.

## Sériová barva



bílá, RAL 9016

## RAL CLASSIC\*

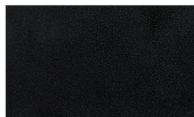


možnost lakování  
ve všech odstínech  
RAL CLASSIC

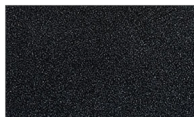
## Barevné edice



Edice Metallic



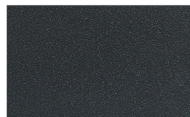
Onyx



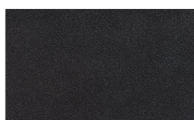
Slate



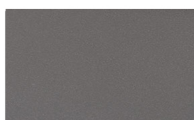
Lava



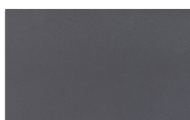
Anthracite Grey



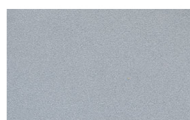
Graphite Metallic



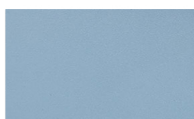
Aluminium Grey



Classic Grey



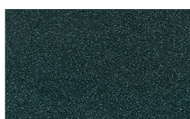
Aluminium January



Ice Blue



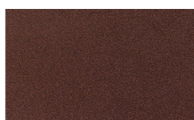
Mid Blue



Ripol



Edice Terra



Dark Brown



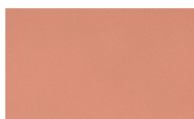
Classic Copper



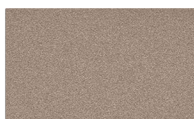
Noble Gold



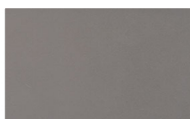
Orange Brown



Noble Pink



Sahara Brown



Grey Gold



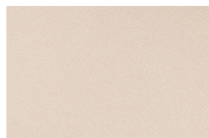
Edice Pastell



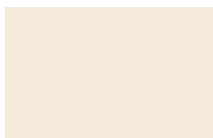
Tranquil



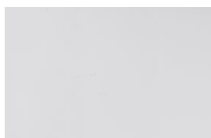
Aegean



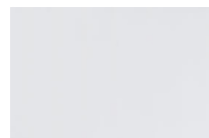
Ivory



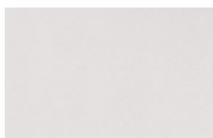
Pergamon



Breeze



Edelweiss



Snow



Edice Nature



Teak



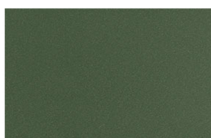
Maple



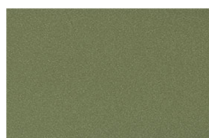
Sunny



Solaris



Reed



Forest

## Žárové zinkování (strukturovaný lak RAL 9016)

Odolná antikoroziční ochranná vrstva pro náročné požadavky do prostředí s vlhkým a/nebo agresivním ovzduším (např. průmyslové provozy, plavecké bazény atd.). Rovněž pro místnosti, které se pravidelně mokrou cestou čistí vysokotlakým čističem. Žárové zinkování zde poskytuje nejlepší možnou antikoroziční ochranu.

## Antikoroziční ochranná vrstva

Antikoroziční ochranná vrstva Kermi se ideálně hodí pro oblasti, ve kterých je nutná zvýšená ochrana proti vlhkosti. Možnost lakování v libovolném barevném odstínu, samozřejmě ve vysoké kvalitě značky Kermi.

